

---

# **EPIC Things**

## BLE Door Lock APP

### User Manual

---

# Table of Contents

## Quick Guide

1. Sign Up	05
2. Login	06
3. Forgot password	07
4. Guest Login	08
5. Main Screen	09
6. Member	10
7. Door Lock	11
8. Wifi Bridge	15
9. Key	19
10. Guest Key	26
11. History	29
12. App Settings	30

EPIC

# Quick Guide

## EPIC Things App Download Guide

To use the EPIC Things App, please download it from the store below.



# Quick Guide

To use the EPIC Things app, the **Super Admin PIN** is required.

## What is a Super Admin?

The EPIC Door Lock offers 3 user level modes:  
Super Admin, General Admin, and User.

The Super Admin has the highest level of access and control over all door lock functions, ensuring more secure management. Additionally, only the Super Admin has the authority to link the app with the door lock, preventing non-owners from linking the app without permission.

## How to Set the Super Admin PIN

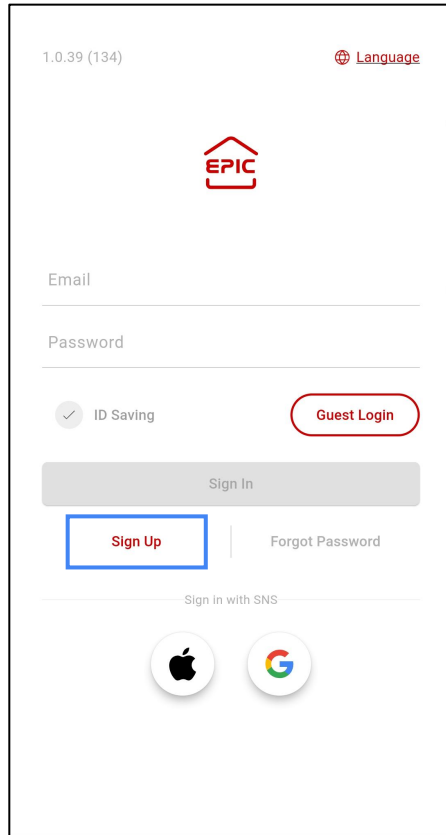
- 1 Press the [R] button on the inner body.
- 2 Enter the User PIN, then press the [#] button.
- 3 Press and hold the [OPEN/CLOSE] button for 3 seconds until the LED on the outer body lights up.
- 4 Enter a 6-12 digit Super Admin PIN, then press the [#] button.
- 5 Re-enter the Super Admin PIN to confirm.
- 6 Press the [R] button to complete the Super Admin PIN registration.

\* If the Super Admin PIN is already registered, the LED will not turn on in step 3.

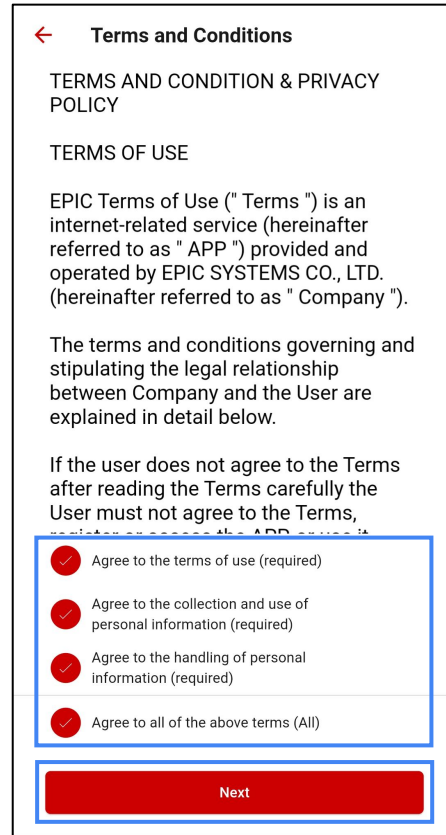
# 1. Sign Up

Sign up to create an EPIC account.

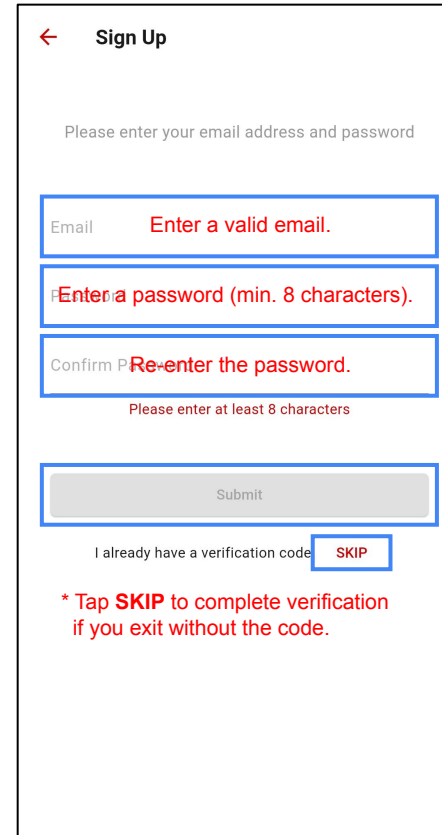
\* If you prefer to log in directly using your Apple or Google account, skip the sign-up process and refer to the [Quick Login] section on the next page.



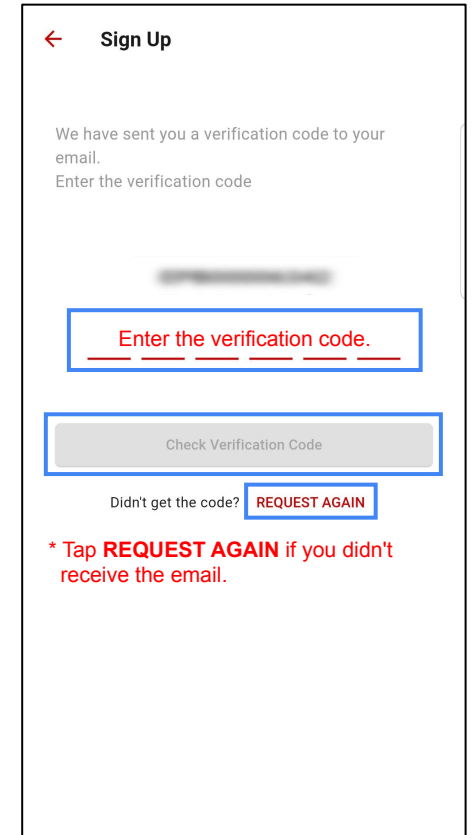
Tap **Sign Up** to start the sign-up process.



Select the checkboxes to agree to the terms and conditions, then tap **Next**.

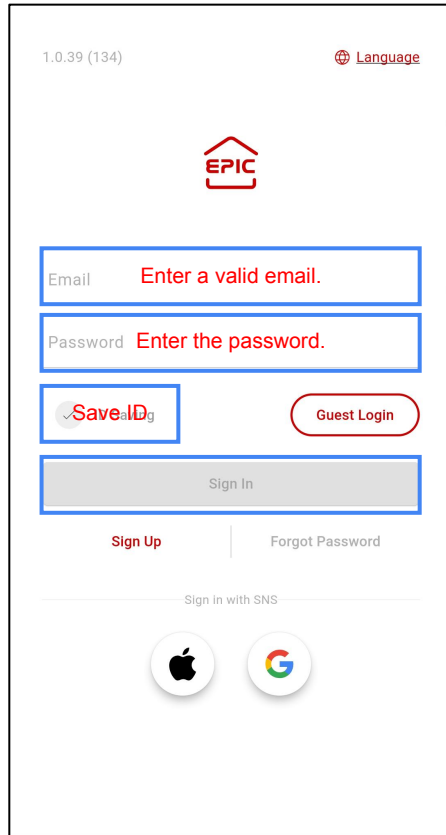


Enter your email and create a password, then tap **Submit**.



Enter the verification code and tap **Check Verification Code** to complete registration.

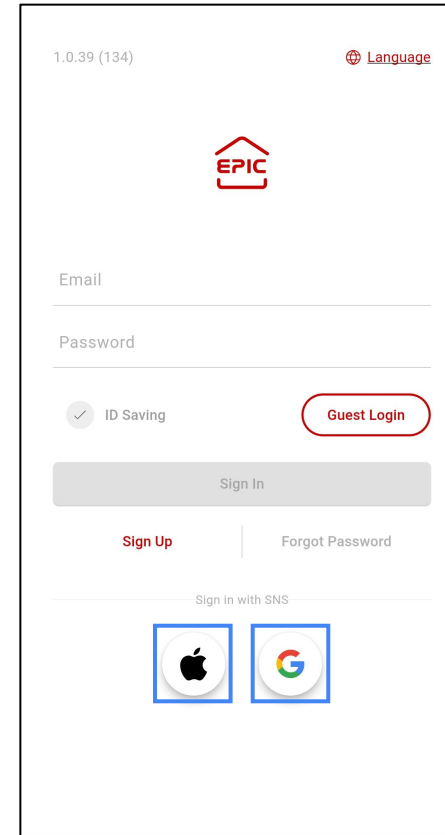
## 2. Login / Quick Login



### Login

Log in with the EPIC account created in Section 1.

- If you have not created an EPIC account yet, refer to Section 1 for the Sign Up process.
- If the ID or password is incorrect, a pop-up will appear, and login will be restricted.



### Quick Login

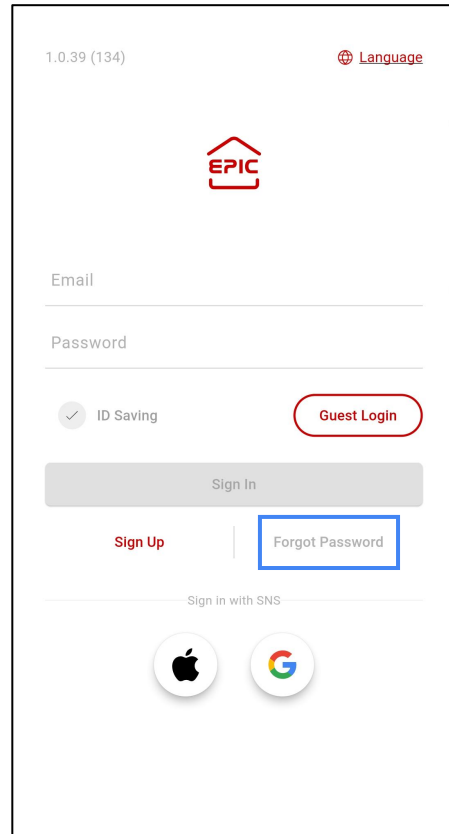
Log in with an Apple or Google account without signing up.

- 'Login' means accessing the app with an EPIC account. 'Quick Login' allows direct access with an Apple or Google account without an EPIC account. Even if the accounts appear identical, they are treated as separate.

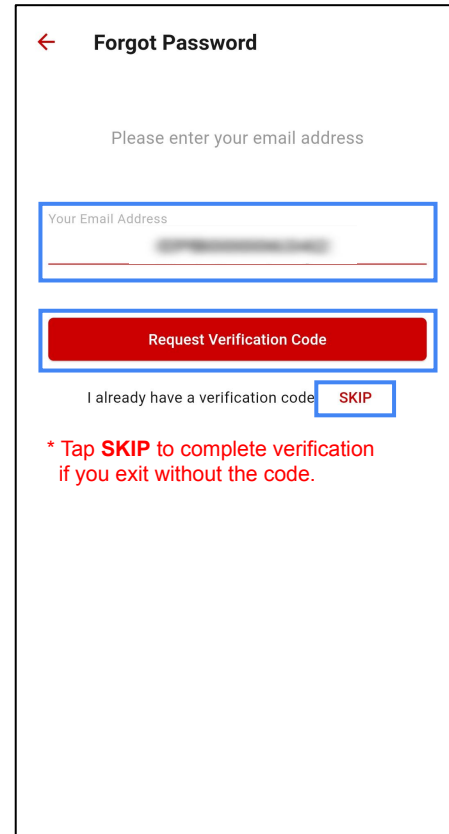
\* Unless you log out, your login status stays even after exiting the app. To return to the login screen, log out.

# 3. Forgot Password

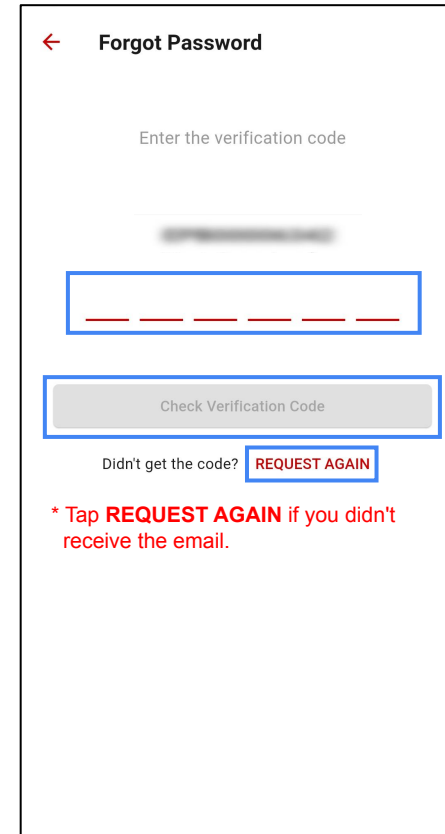
If you've forgotten your password, tap **Forgot Password** to change it.



Tap **Forgot Password** to change your password.



Enter the email used for sign-up and tap **Request Verification Code** to send.



Enter the verification code and tap **Check Verification Code** to complete.

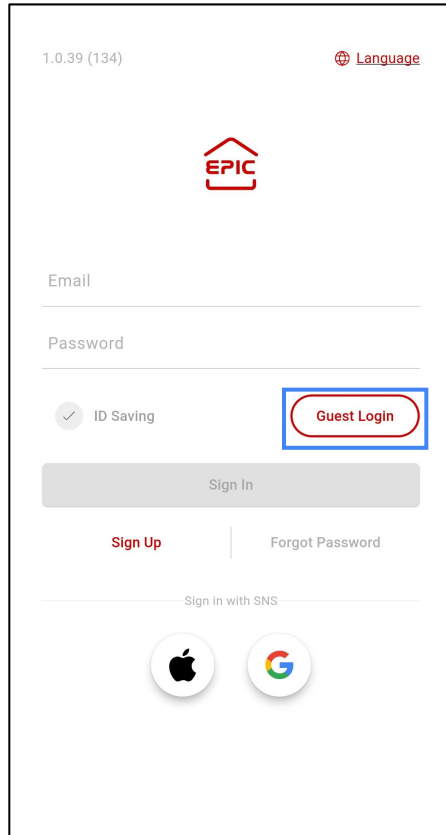


Enter the new password and tap **Yes** to complete change.

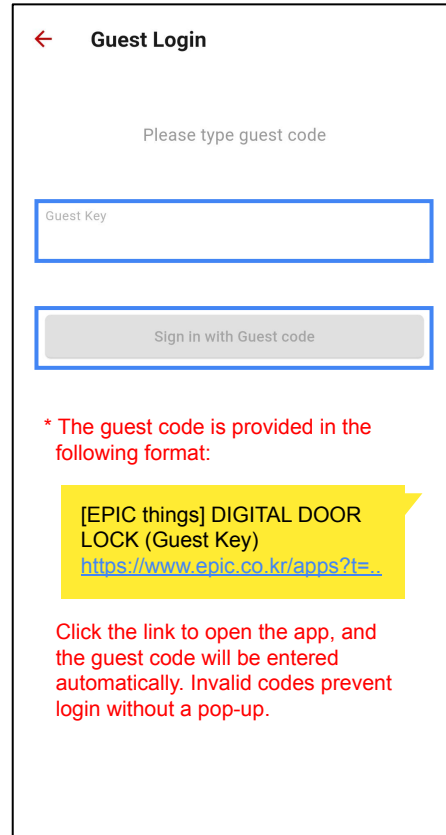
# 4. Guest Login

Enter the guest code to login as a guest. You can open the door within the allowed validity period.

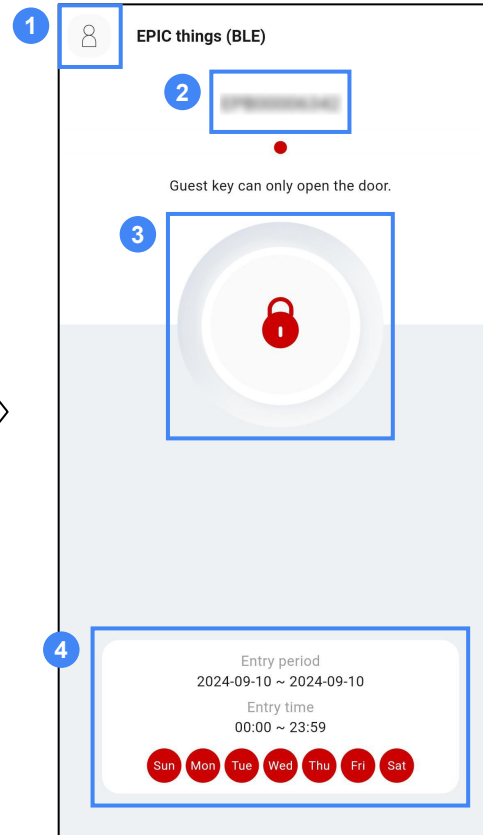
\* If you log out as a guest, the guest key is deactivated immediately, regardless of the remaining valid time, and you cannot log in again with the same key.



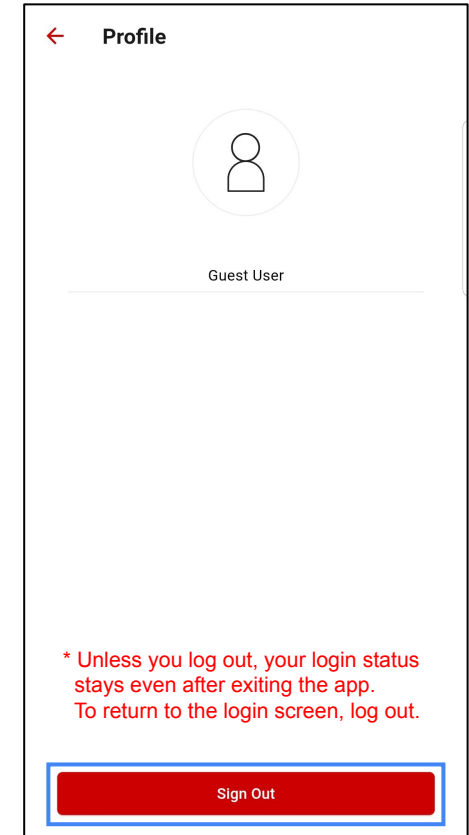
Tap **Guest Login**.



Enter the guest code and tap **Sign In with Guest code** to log in.

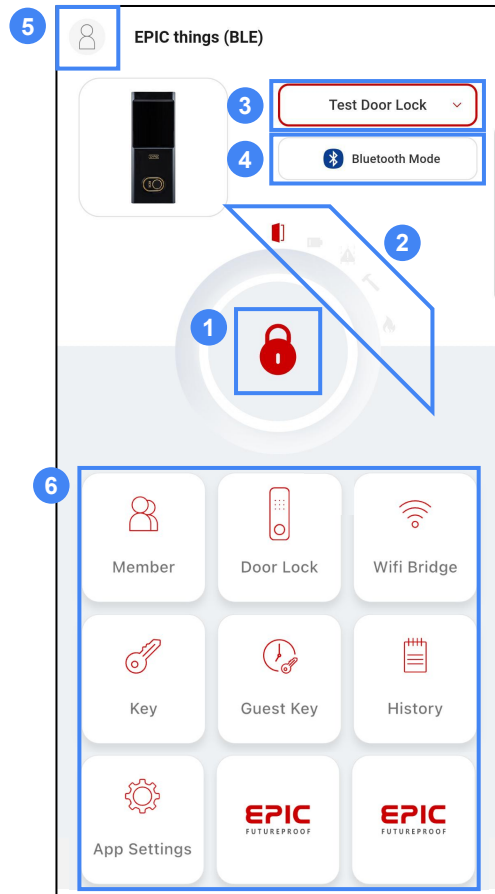



- 1 Profile
- 2 Door Lock Name
- 3 Open Button
- 4 Entry Period



To log out, tap **Sign Out** in the Profile.


# 5. Main Screen





**1 Open/Close button:** Use this button to open and close the door. When the door is open, the lock icon in the center changes to an open state .

**2 Door Lock Status:** Check the current status of the door lock. It shows the lock's status, and in certain situations, the icon will appear in red.




**3** Displays the names of the door locks currently in use. Selecting this option allows you to view a list of available door locks. The currently used door lock has a red border, and the lock registered to your account is labeled 'me' .

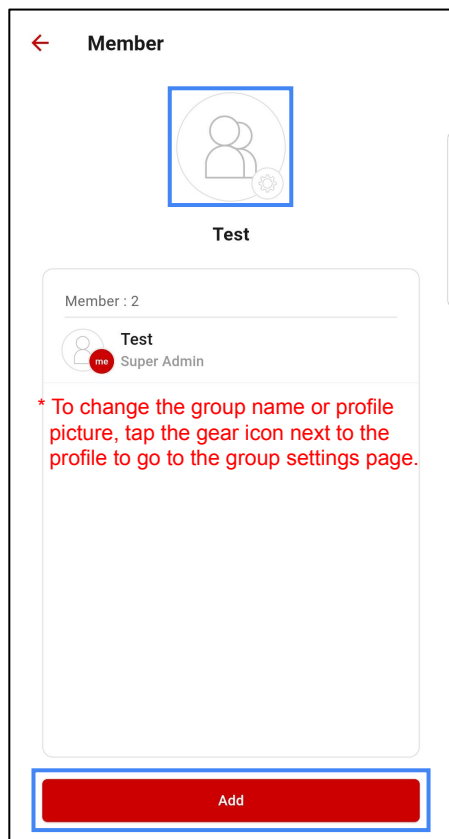
**4** Displays the current connection mode in use. Selecting this option allows you to view a list of available connection modes. Connection modes are divided into Bluetooth  and Wifi , with Bluetooth set as the default. Wifi mode supports long-distance communication and Guest Key usage, and requires a Wifi bridge to activate.

**5 Profile:** The profile setting feature is available. For more details, refer to Section 12: App Settings.

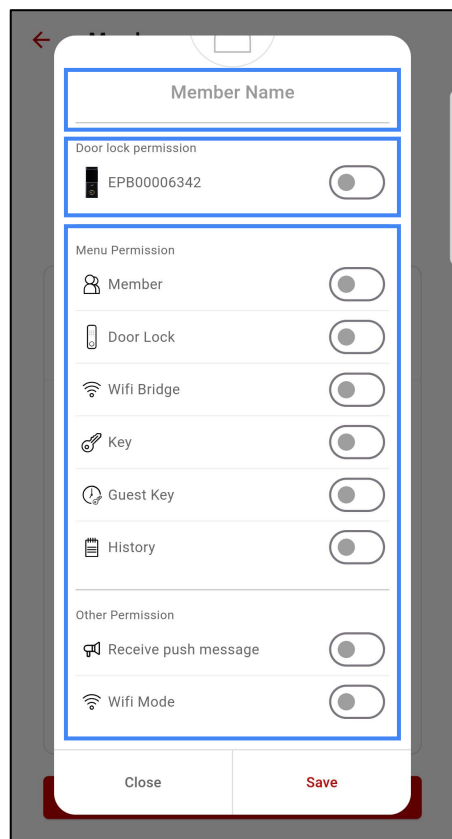
**6 Menu:** Check and configure related functions in the Menu section.

## 6. Member

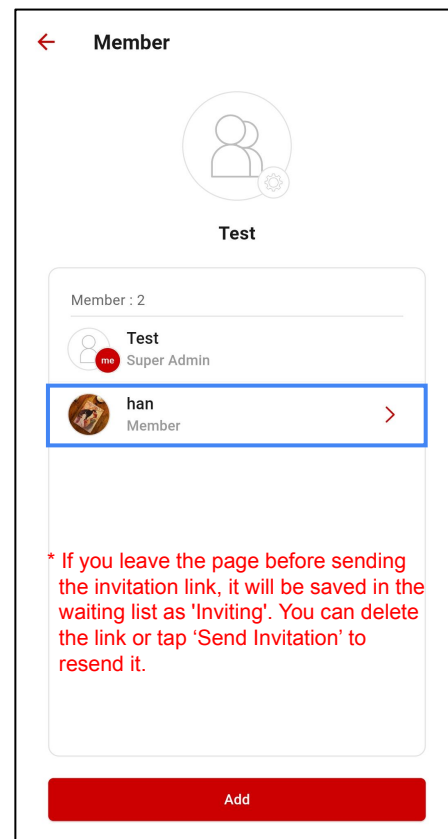
Select 'Members ' from the menu to access the member management page, where you can invite members and manage their door lock permissions.



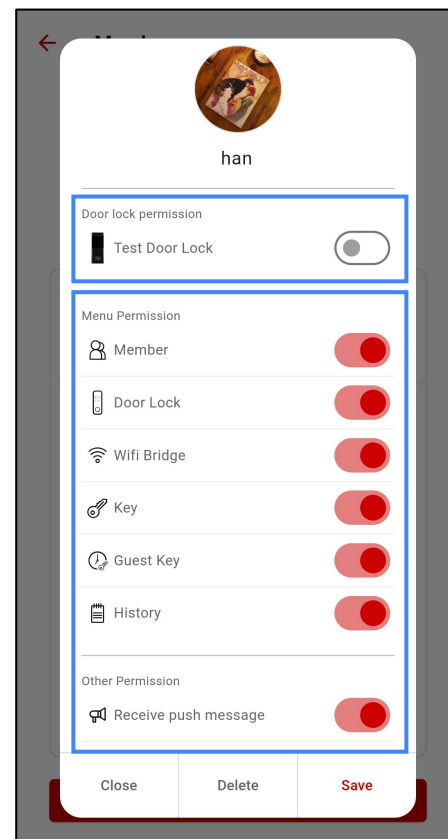
Tap **Add** to invite a member.



Enter the member's name, select the door lock and features, then tap **Save** to share the invitation link and add the member.




Tap a specific member in the list to set the permissions for that member.

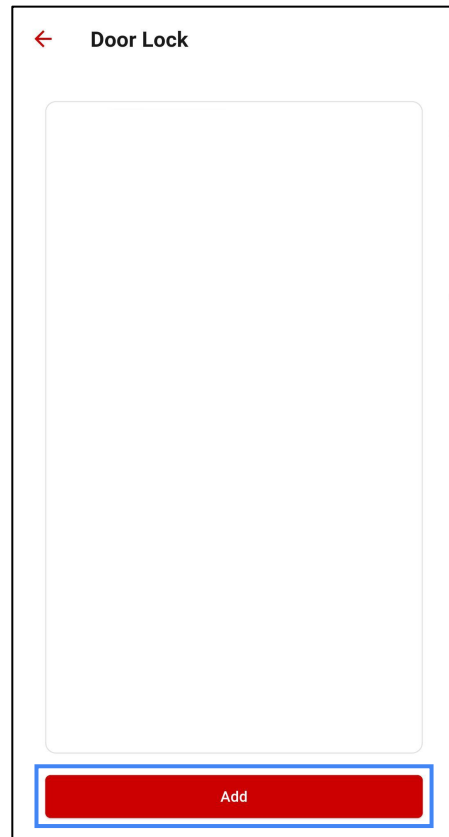


After setting the permissions, tap **Save** to save the changes, or tap **Delete** to remove the member from the group.

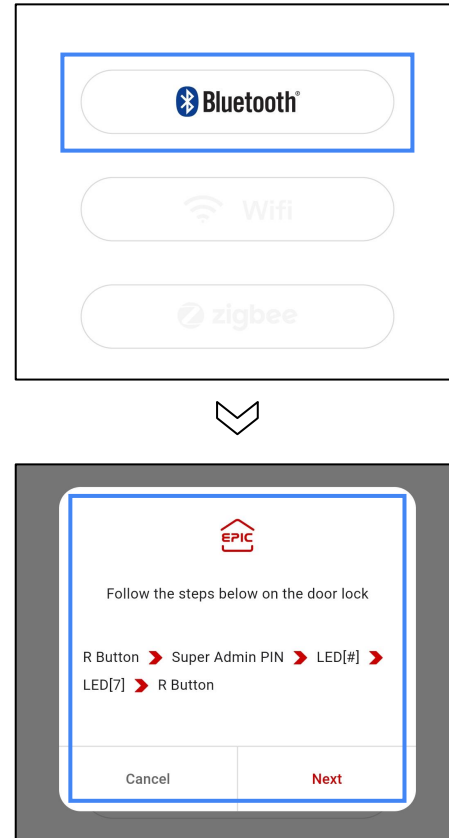
# 7. Door Lock

Select 'Door Lock 

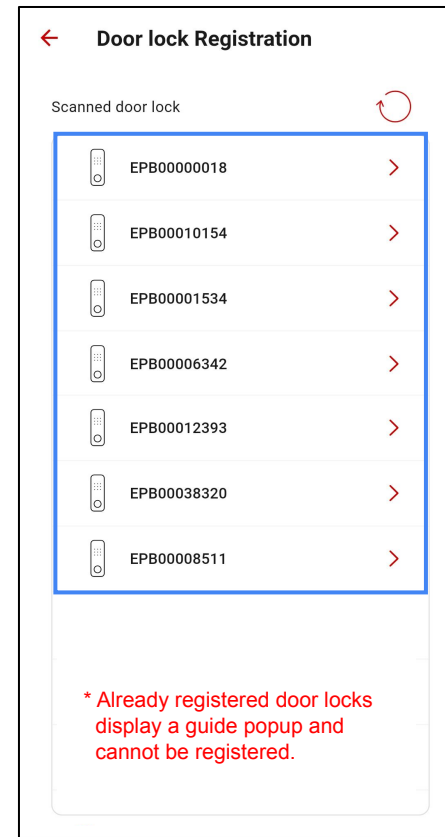
\* A Super Admin PIN is required to register the door lock. Refer to the Quick Guide on page 4 for the Super Admin PIN setup instructions.



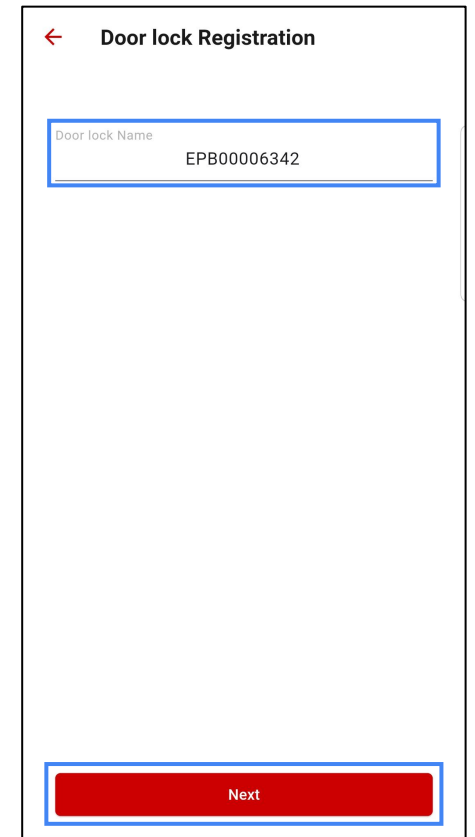
Tap **Add** to add a door lock.



Tap Bluetooth to display the registration guide popup. Follow the instructions to set the door lock to registration standby mode, then tap **Next**.



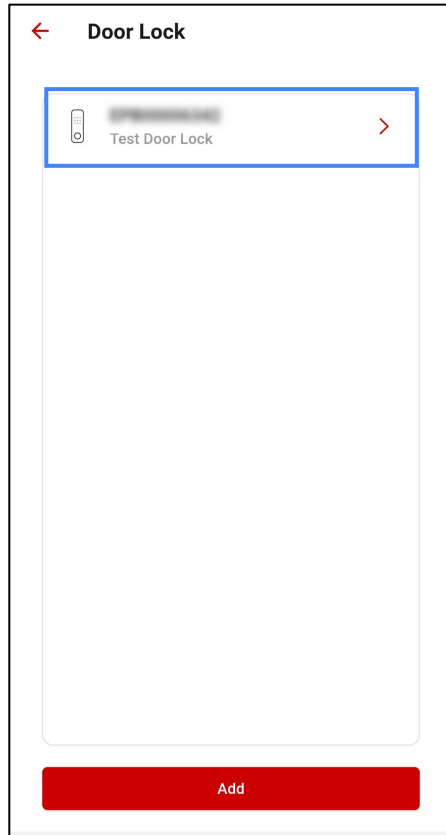
Find and select the BLE number of the door lock you want to register. The BLE number is on the inner body sticker of the door lock.



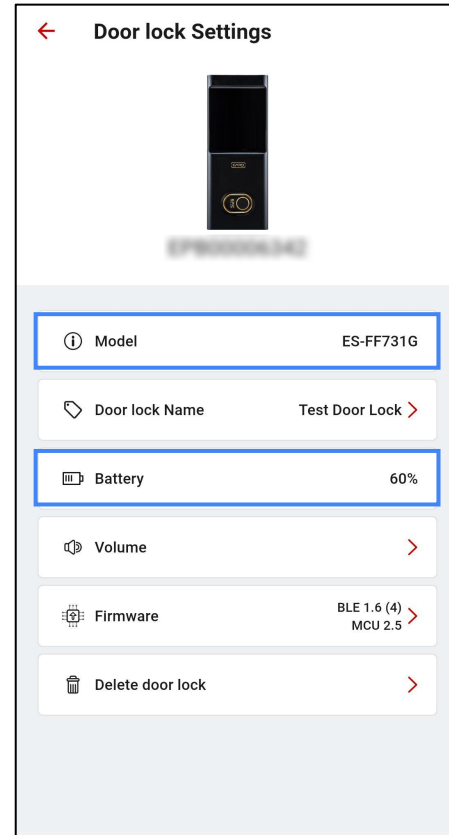
Change the door lock name and tap **Next** to complete registration.

## 7. Door Lock - Door Lock Settings (1)

To configure the details related to the door lock, tap the desired door lock. On this page, you can view the model name and battery status, change the name, adjust the volume, check and update the firmware, and delete the door lock.



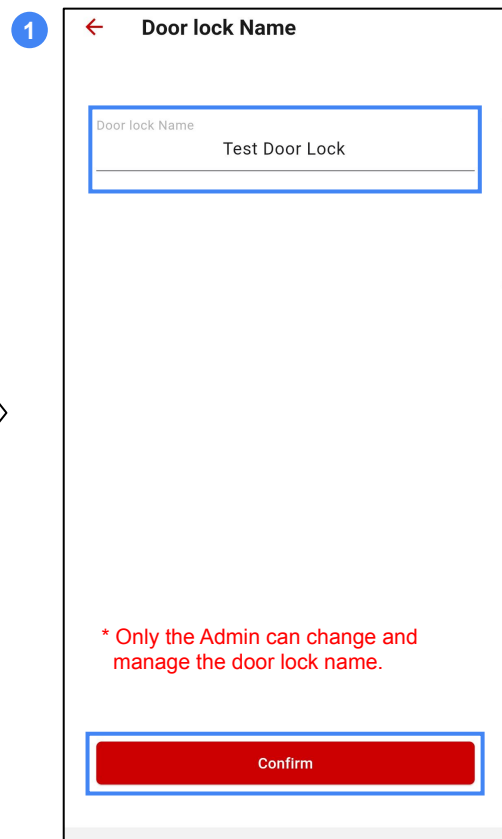
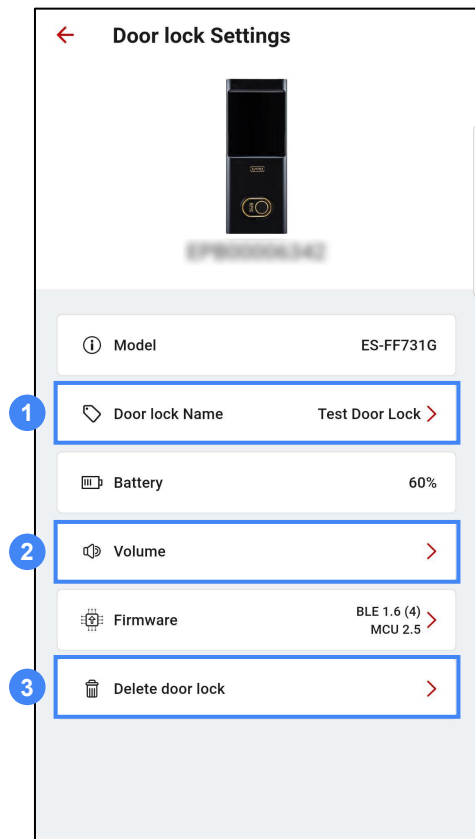
Select the door lock from the list to configure its settings.



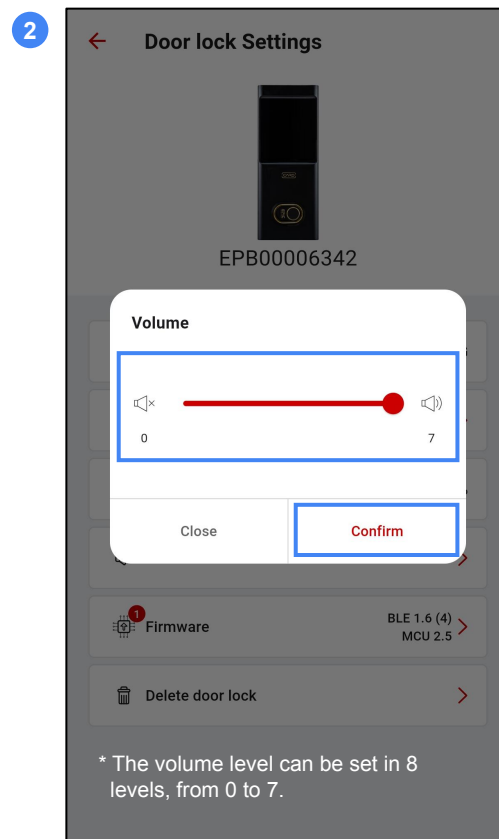
The model name and battery status of the selected door lock are displayed.

- If a red icon appears in the menu or door lock list, it indicates that a firmware update is required. When you see this icon, please update the firmware.
- For more details about the firmware update, refer to page 14.

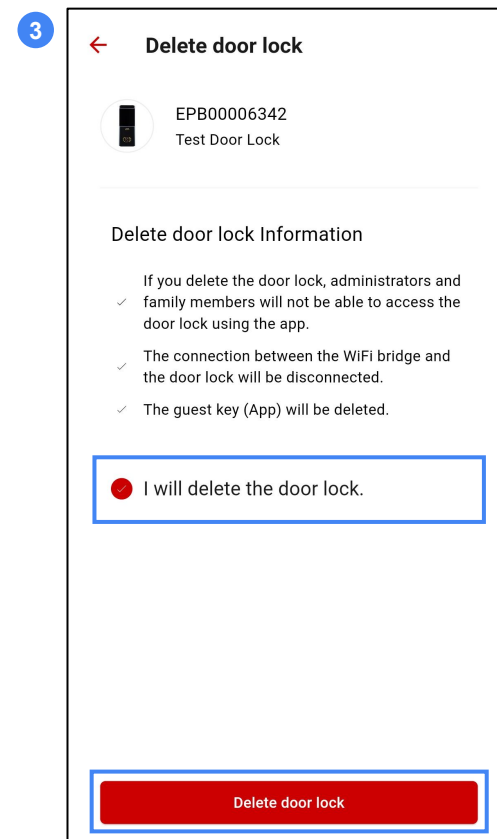
# 7. Door Lock - Door Lock Settings (2)



After entering the new name, tap **Confirm** to change the door lock name.



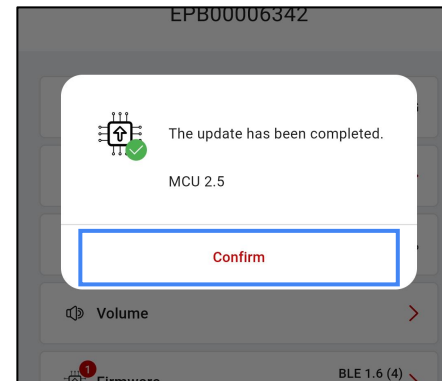
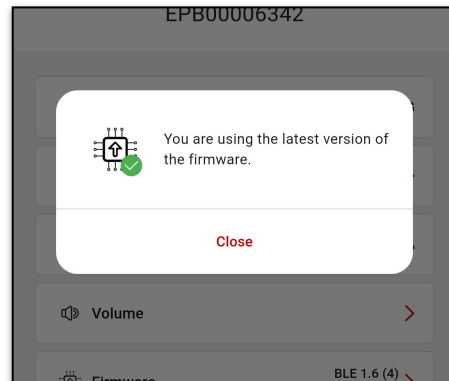
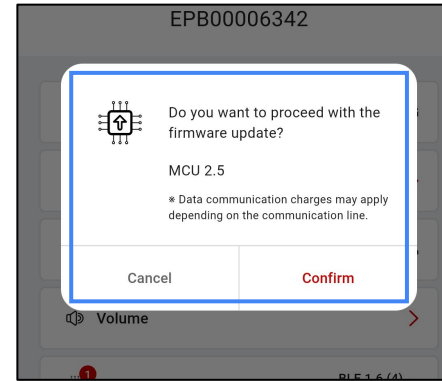
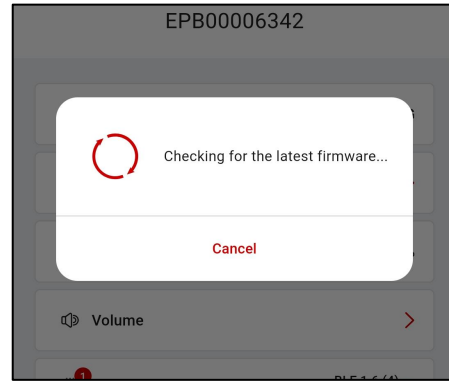
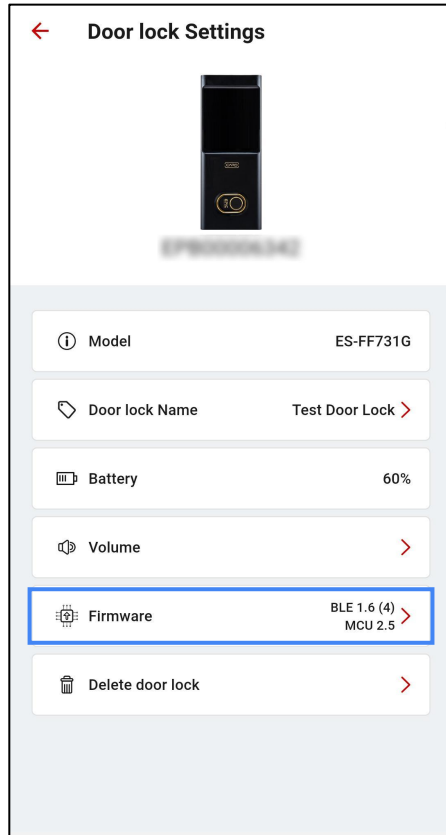
Set the desired volume and tap **Confirm** to adjust the volume.



After reviewing the deletion notice and selecting the agreement checkbox, tap **Delete door lock** to remove the door lock from your account.

## 7. Door Lock - Door Lock Settings (3)


To update the door lock, tap Firmware.



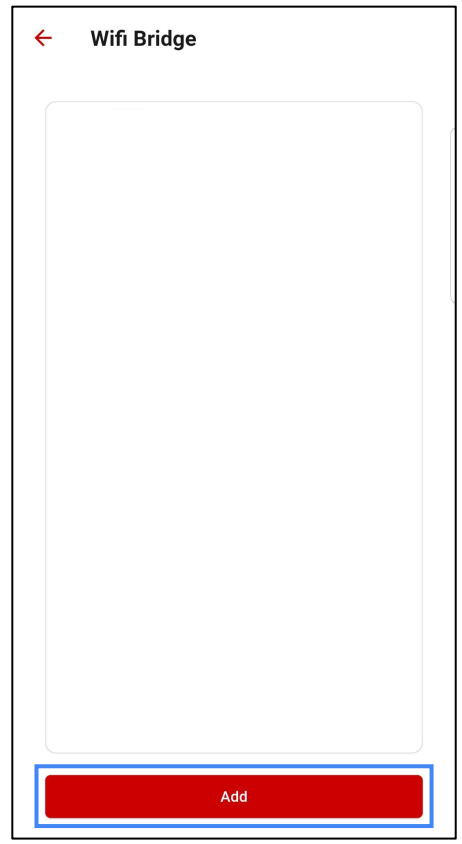
The firmware version is checked automatically, and a dialog appears if it is already up to date.

If it is not the latest version, a dialog appears asking whether to proceed with the update. Tap **Confirm** to complete the update.

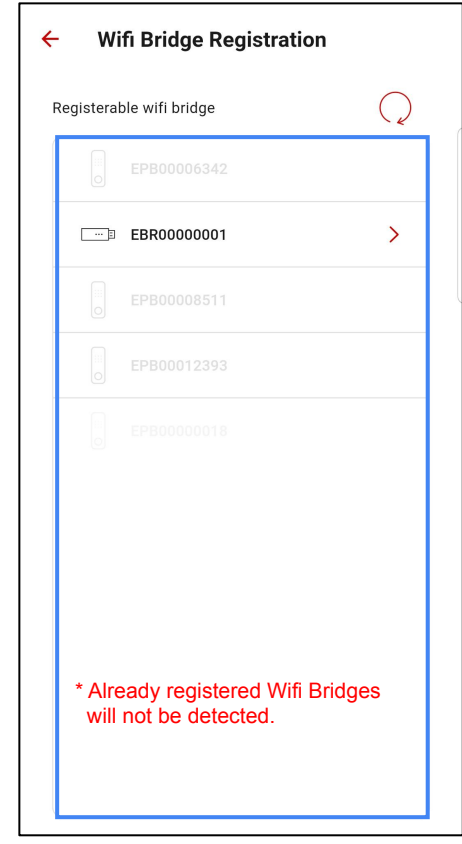
# 8. Wifi Bridge

Select 'Wifi Bridge ' from the menu to access the Wifi Bridge management page, where you can register a Wifi Bridge, view the list of registered Wifi Bridges, and manage them.

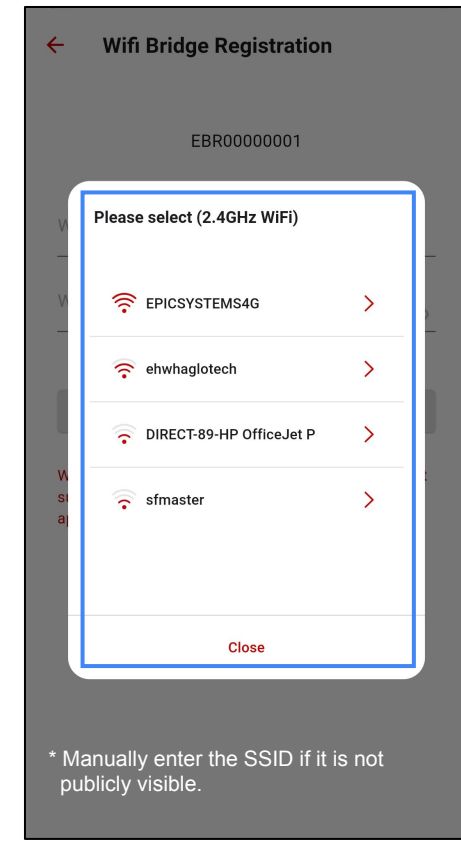
\* To use Wifi mode, you must connect the Wifi bridge and power supply.



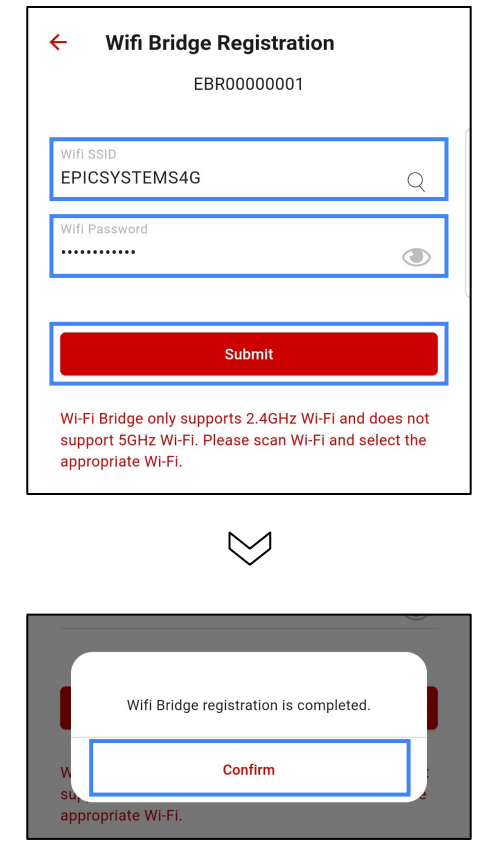
Tap **Add** to add a Wifi Bridge.



Find and select the unique number of the Wifi Bridge you want to register. The unique number is on the sticker on the inner body of the Wifi Bridge.



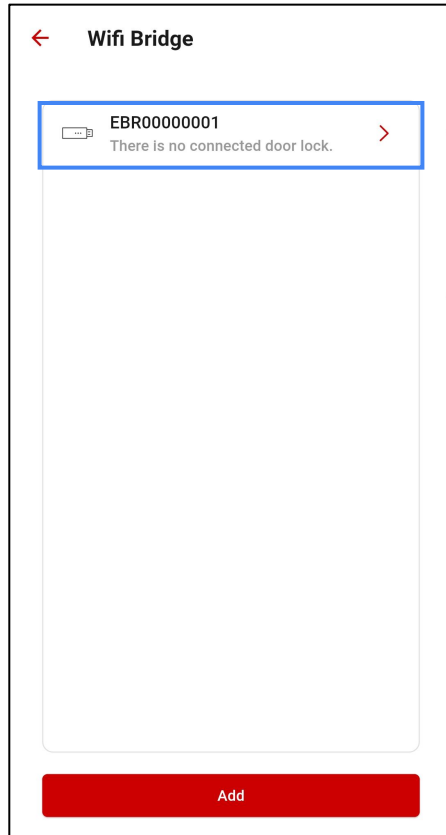
This is the list of available Wifi networks for the Wifi Bridge. Select the Wifi network to connect.



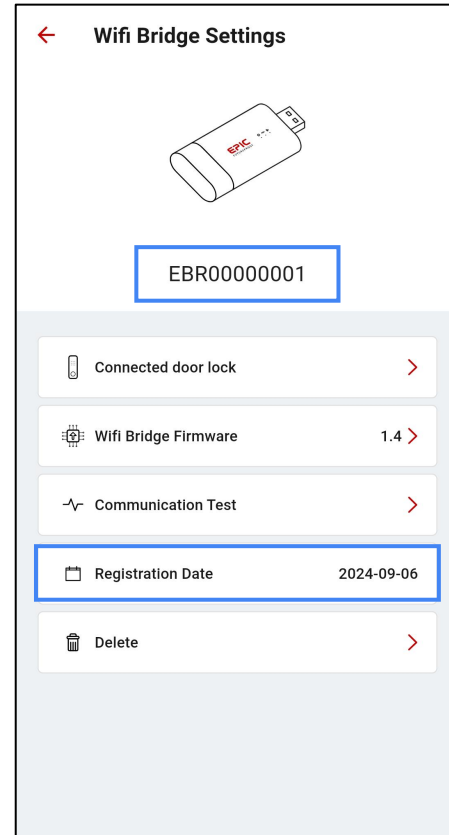
Enter the password for the selected Wifi network and tap **Submit** to complete the bridge registration.

## 8. Wifi Bridge Settings (1)

To configure the details related to the Wifi Bridge, tap the desired Wifi Bridge. On this page, you can check the connected door lock and connection status, view the registration date, check and update the firmware, and delete the bridge.



Select the Wifi Bridge from the list to configure its settings.



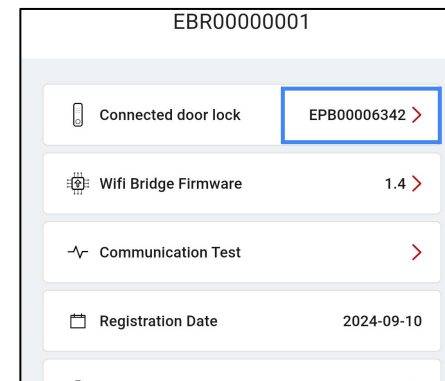
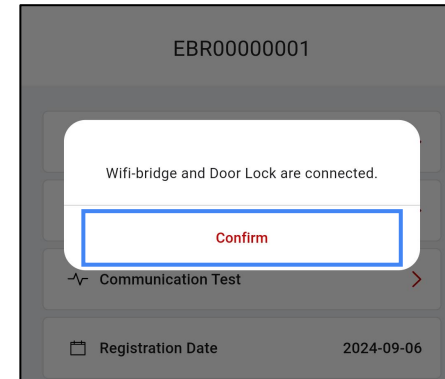
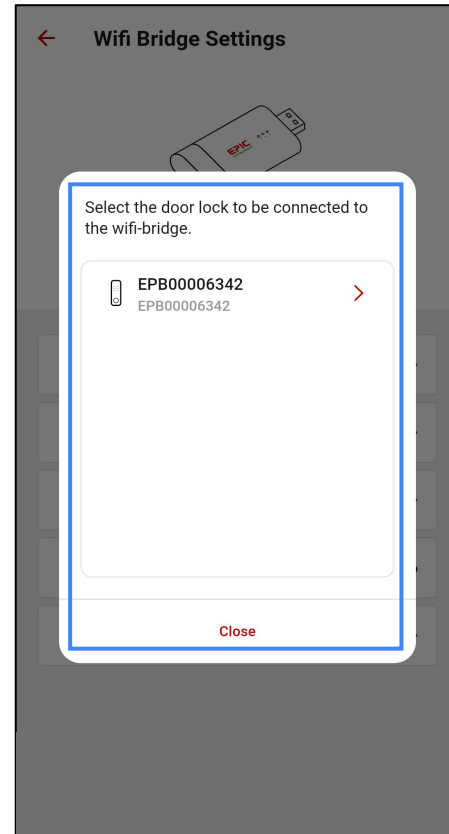
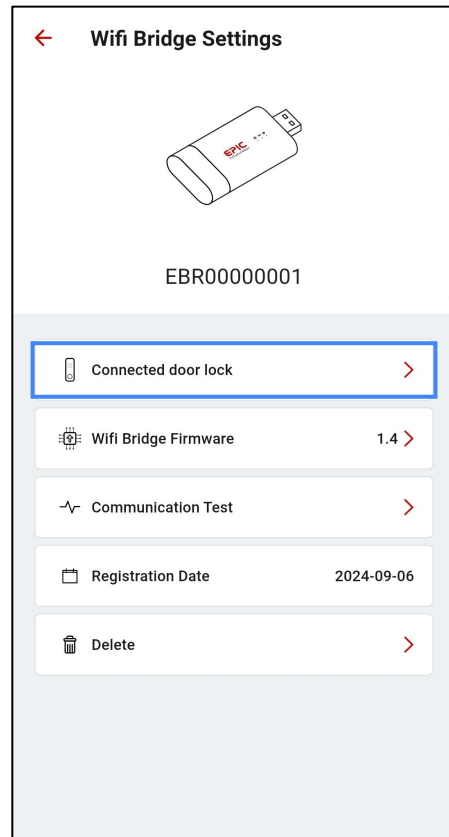
The unique number and registration date of the selected Wifi Bridge are displayed.

- If a red icon appears in the menu or Wifi Bridge list, it indicates that a firmware update is required. When you see this icon, please update the firmware.
- For more details about the firmware update, refer to page 18.

## 8. Wifi Bridge Settings (2)

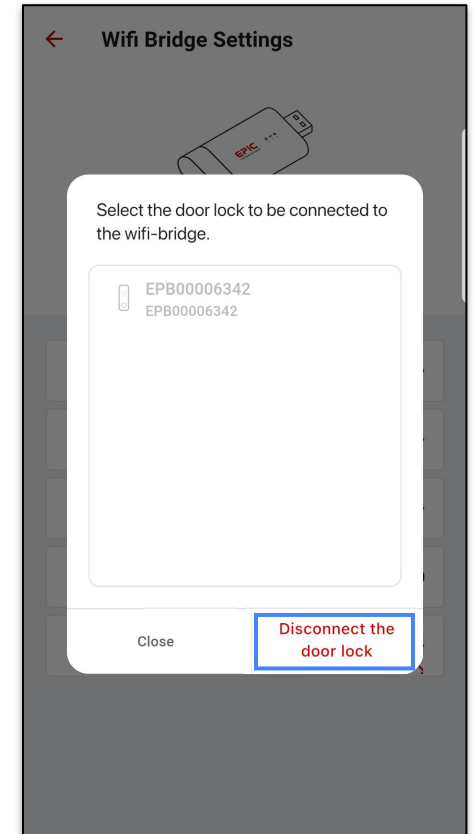
To connect a Wifi Bridge to a door lock, tap **Connected door lock**.

\* Each bridge can be connected to only one door lock. The bridge name cannot be changed separately.



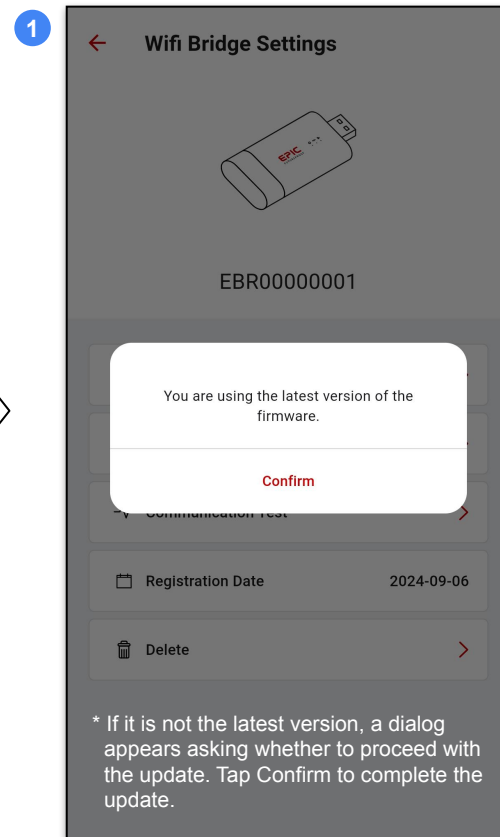
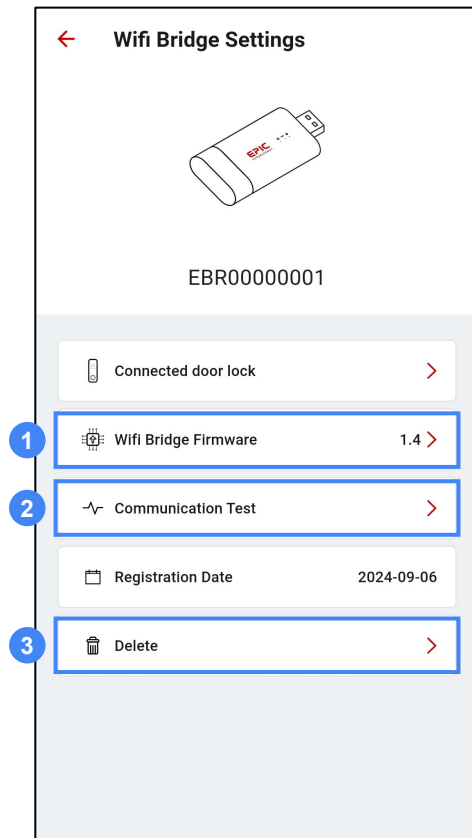
This is the list of registered door locks that can be connected to the Wifi Bridge. Select a door lock to connect.

Tap **Confirm** to complete the connection. Once connected, the model name of the connected door lock will be displayed.

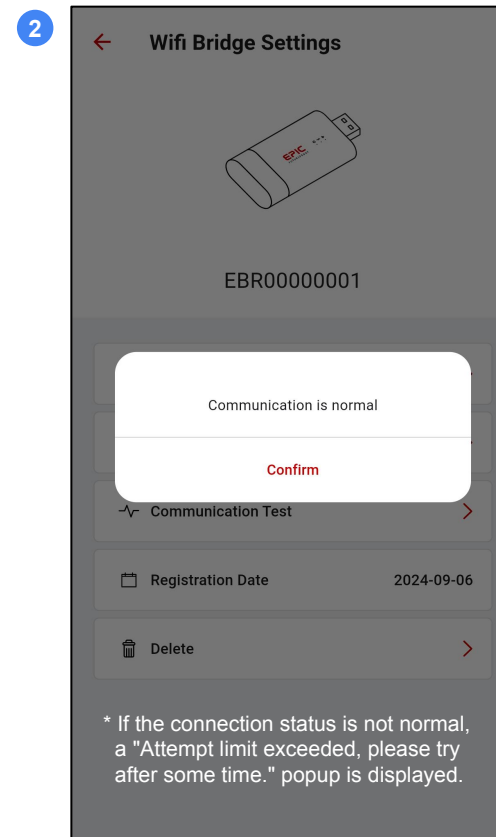


To disconnect an already connected bridge and door lock, tap **Disconnect the door lock** in **Connected door lock**.

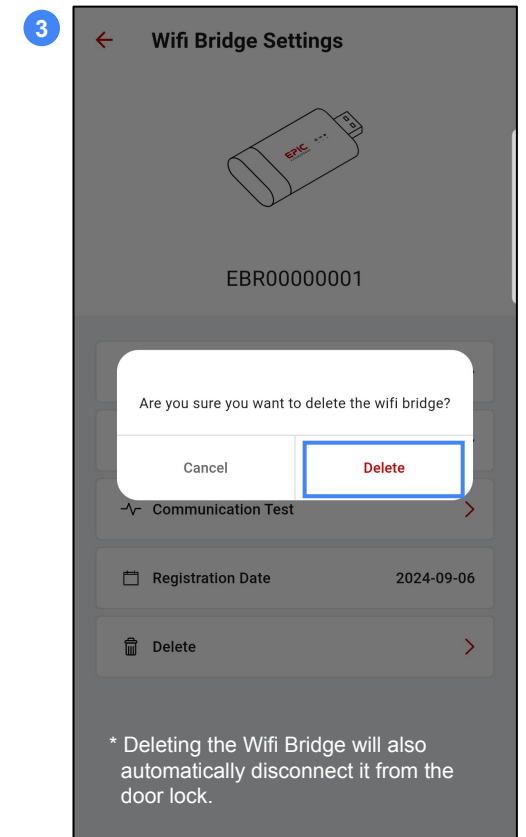
## 8. Wifi Bridge Settings (3)



To update the WiFi Bridge firmware, tap **Wifi Bridge Firmware**. The firmware version is checked automatically, and a dialog appears if it is already up to date.




To check the connection status of the Wifi Bridge, tap **Communication Test**. If the connection is good, a 'Communication is normal' popup is displayed.

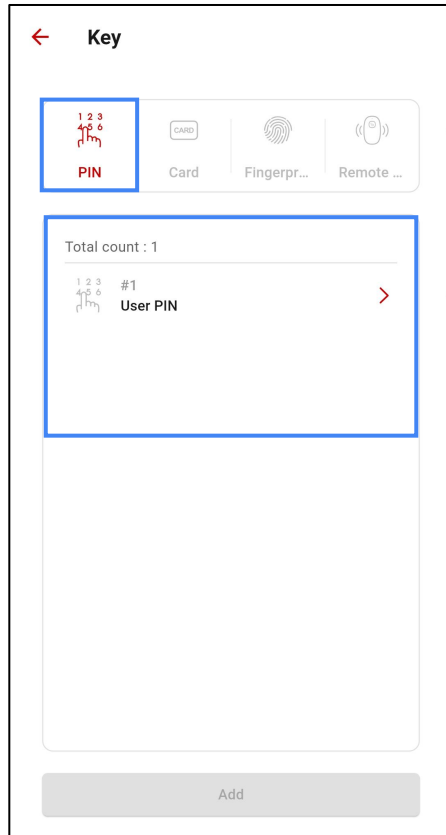


To delete a bridge registered to your account, tap **Delete**, and then tap **Delete** on the confirmation popup.

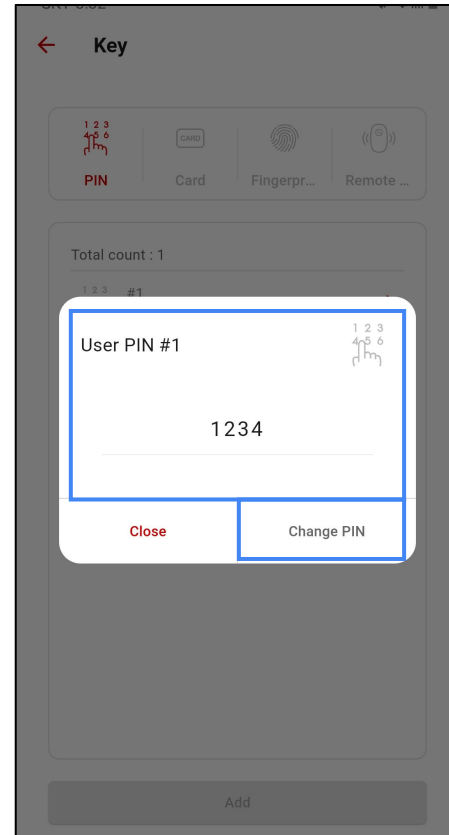
# 9. Key

Select 'Key ' from the menu to access the key management page, where you can manage the authentication methods registered to the door lock or use features that simplify the registration process.

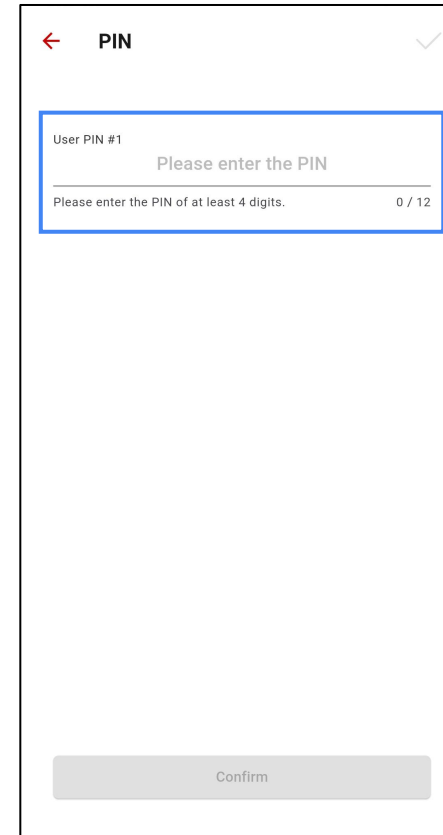
\* You can quickly complete the authentication method registration process through the app. However, authentication methods other than the PIN cannot be registered directly on the smartphone.



Tap **User PIN** in **PIN**.



To check the current PIN and change it, tap **Change PIN**.



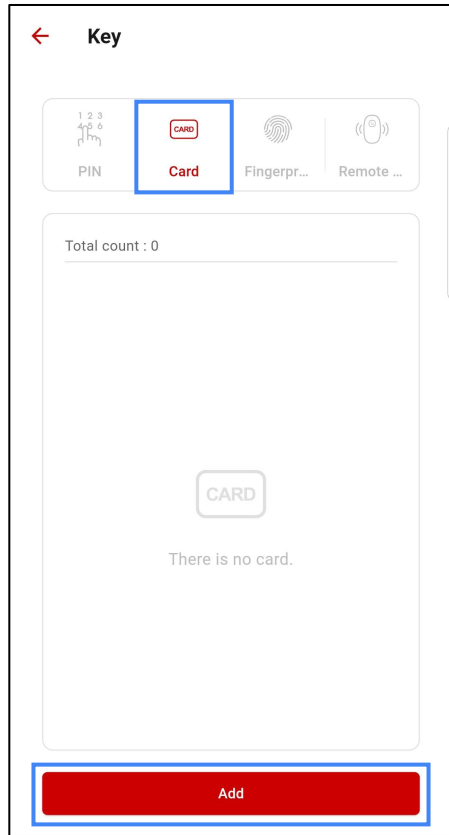
Enter the new PIN to change.

## PIN Management

Check and change the PIN number registered in the door lock.

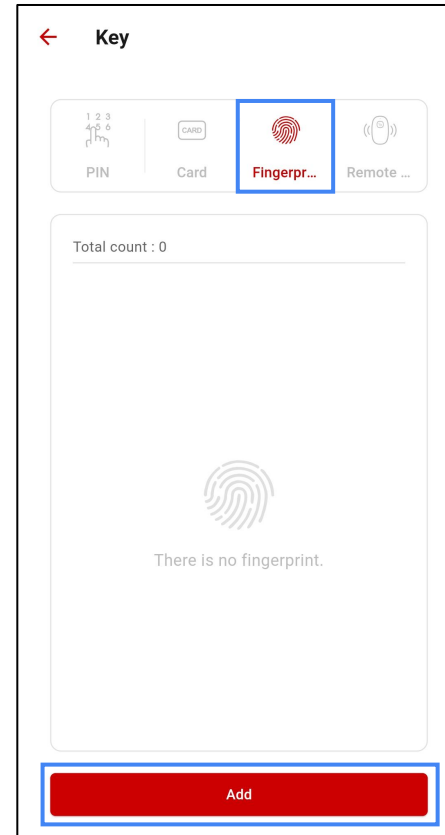
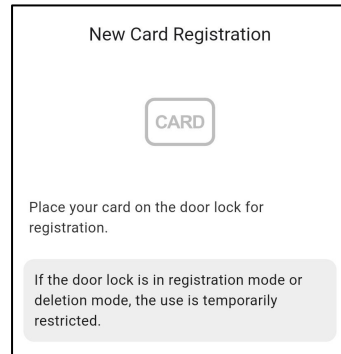
- The PIN changed through this feature is the user PIN and not the Super Admin PIN.
- The user PIN must be at least 4 digits long, and only one PIN can be set.

# 9. Key Registration (1)



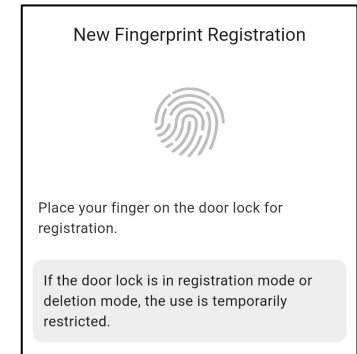
## Card Registration

Card > Add > Follow the instructions in the pop-up dialog to proceed with the card registration process.

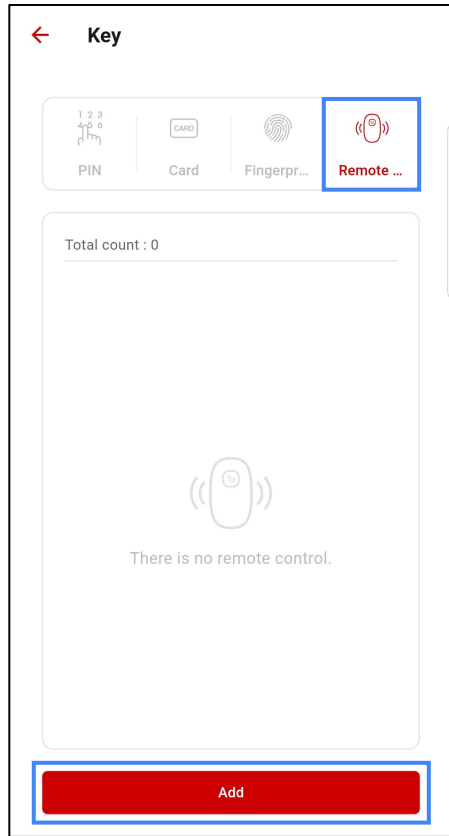


## Fingerprint Registration

Fingerprint > Add > Follow the instructions in the pop-up dialog to proceed with the fingerprint registration process.

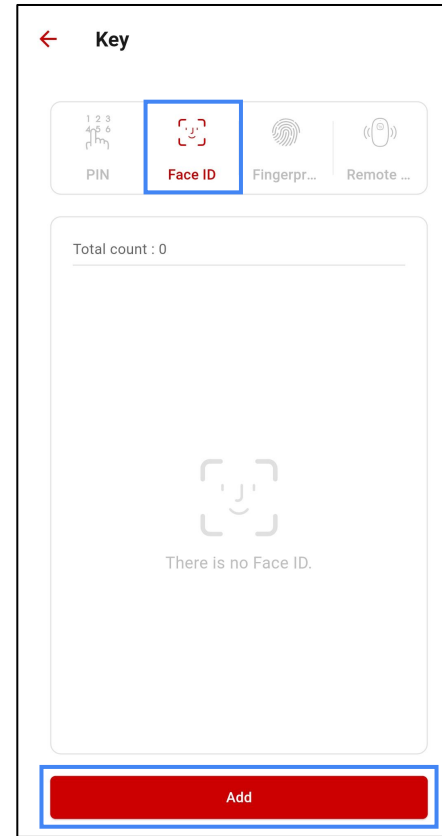
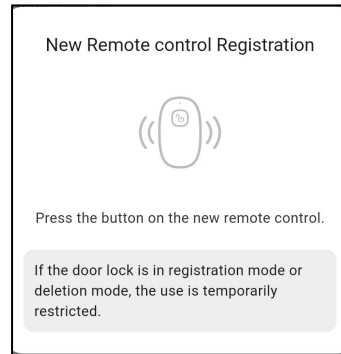


# 9. Key Registration (2)



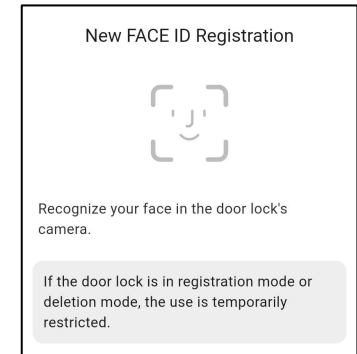
## Remote Control Registration

Remote Control > Add > Follow the instructions in the pop-up dialog to proceed with the remote control registration process.

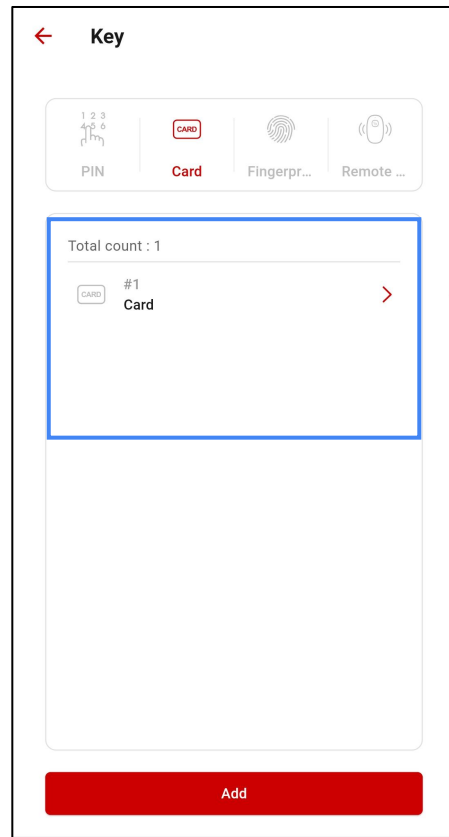


## Face ID Registration

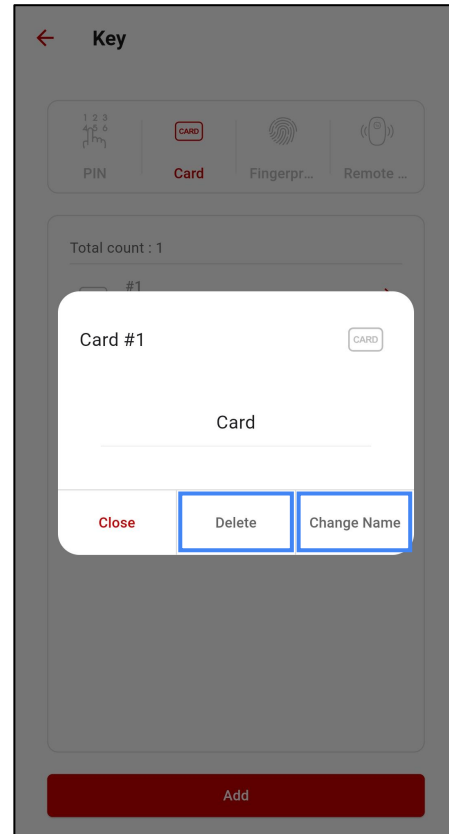
Face ID > Add > Follow the instructions in the pop-up dialog to proceed with the Face ID registration process.



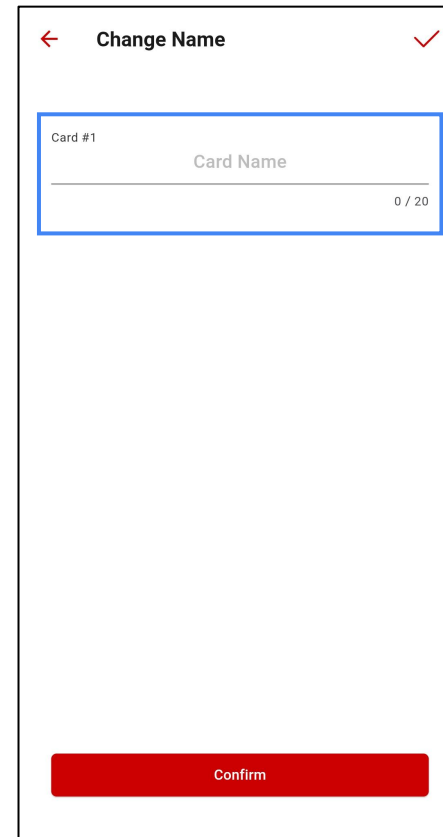
# 9. Key Management (1)



This is the list of registered cards.



Tap **Delete** to remove the card or **Change Name** to rename it.

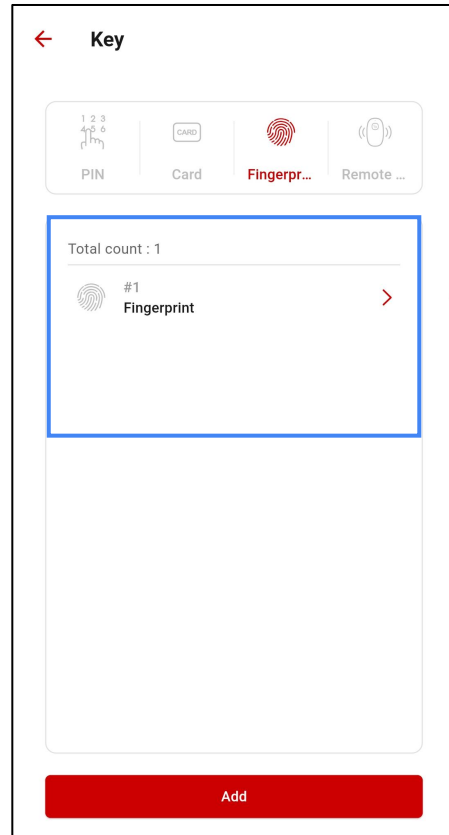


Enter the new name for the card.

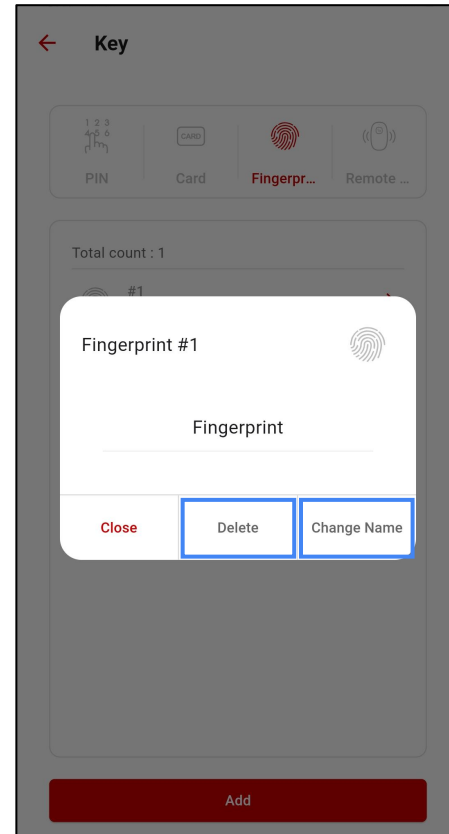
## Card Management

To manage cards, select a registered card from the list. You can delete it or rename it.

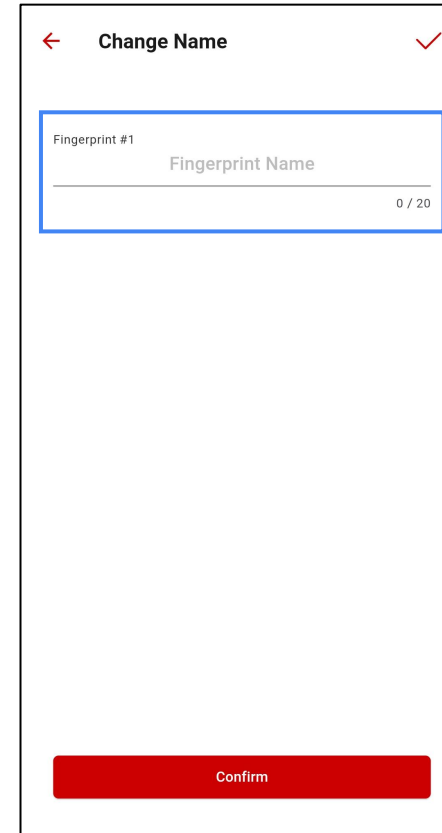
## 9. Key Management (2)



This is the list of registered fingerprints.



Tap **Delete** to remove the fingerprint or **Change Name** to rename it.

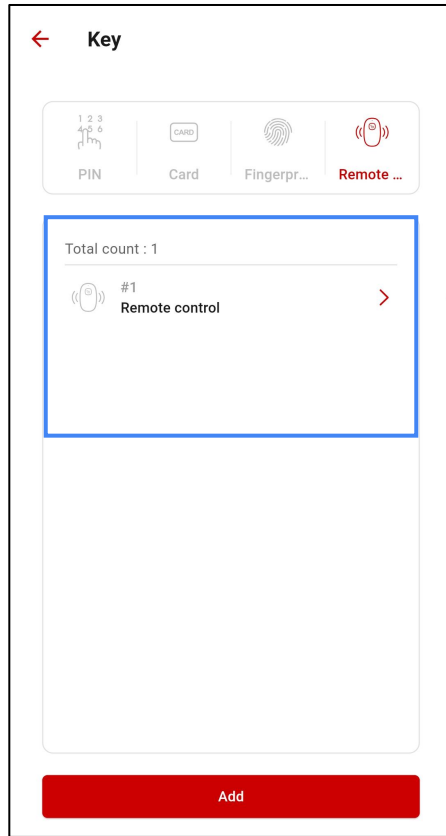


Enter the new name for the fingerprint.

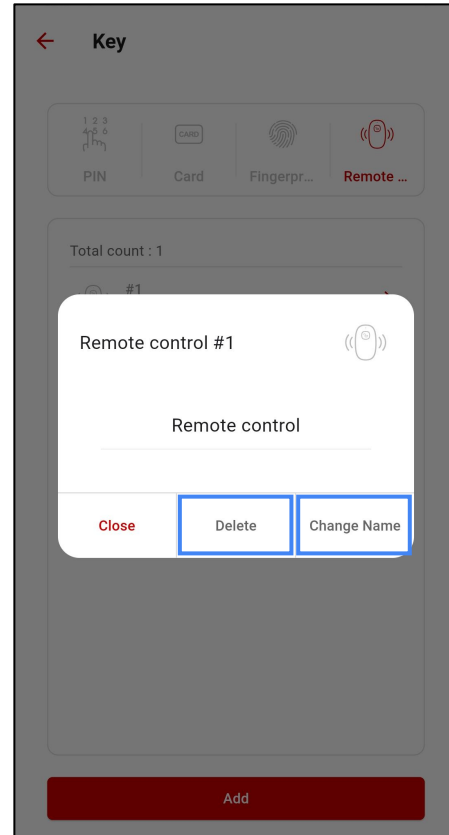
### Fingerprint Management

To manage fingerprints, select a registered fingerprint from the list. You can delete it or rename it.

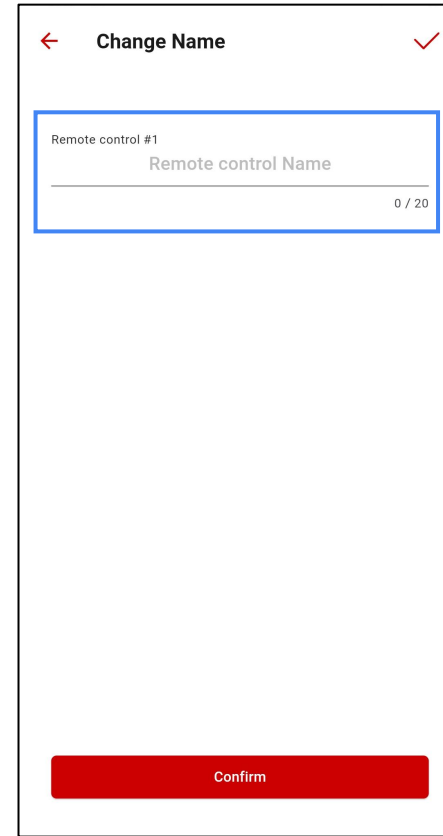
# 9. Key Management (3)



This is the list of registered remote controls.



Tap **Delete** to remove the remote control or **Change Name** to rename it.

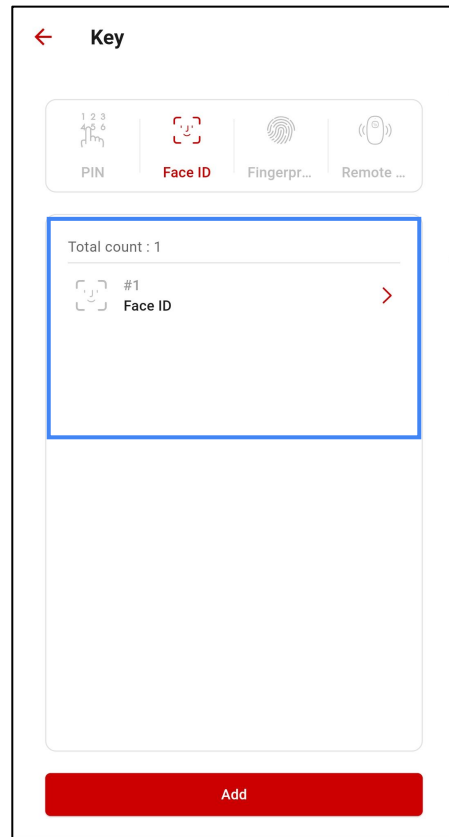


Enter the new name for the remote control.

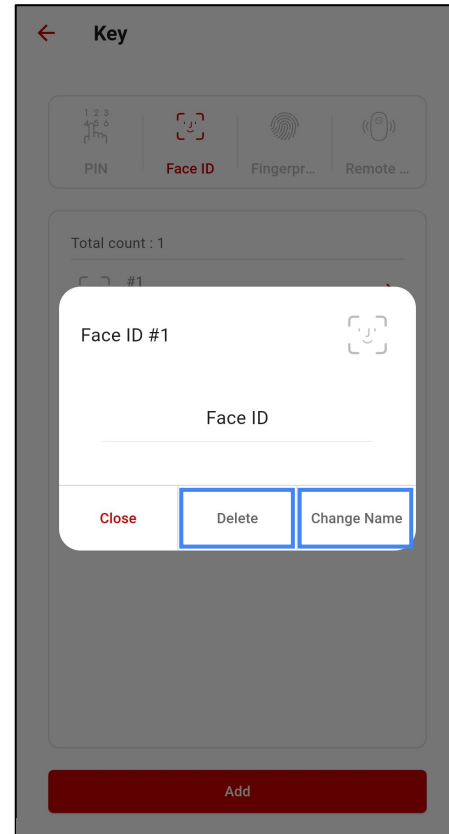
## Remote Control Management

To manage remote controls, select a registered remote control from the list.  
You can delete it or rename it.

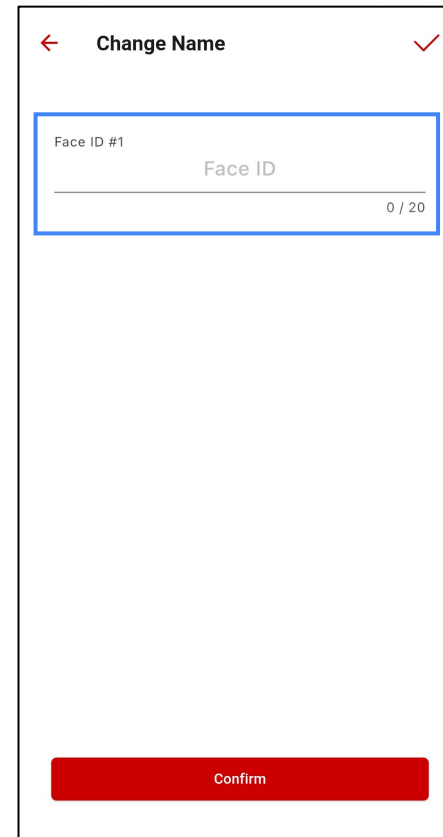
# 9. Key Management (4)



This is the list of registered Face ID.



Tap **Delete** to remove the Face ID or **Change Name** to rename it.




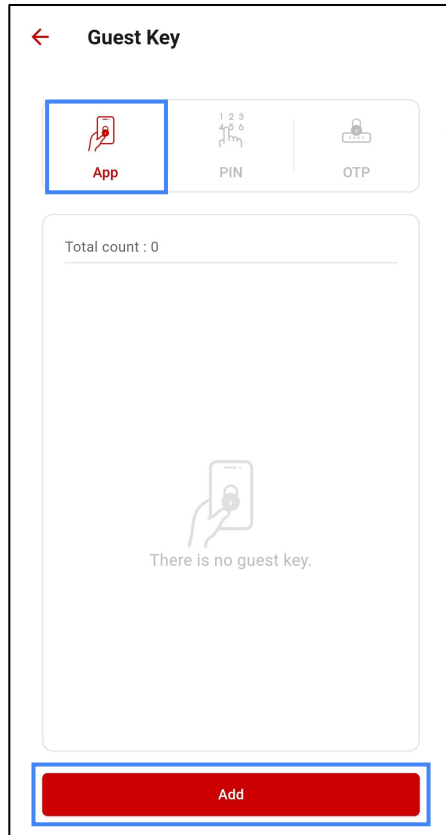
Enter the new name for the Face ID.

## Face ID Management

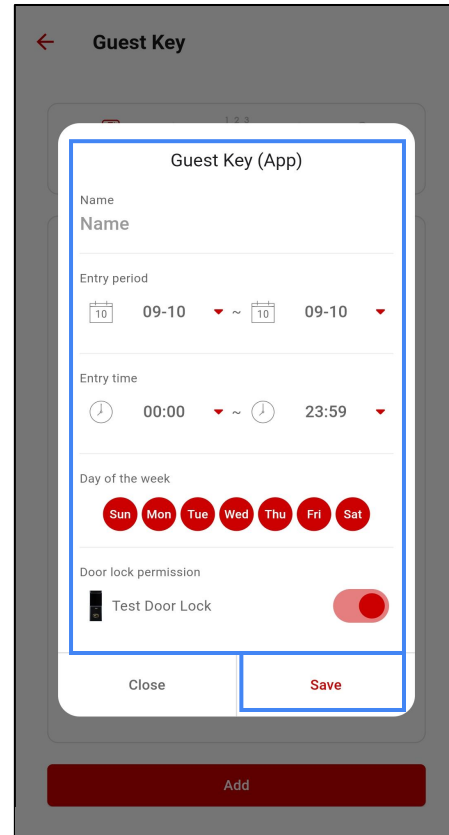
To manage Face ID, select a registered Face ID from the list. You can delete it or rename it.

# 10. Guest Key (1)

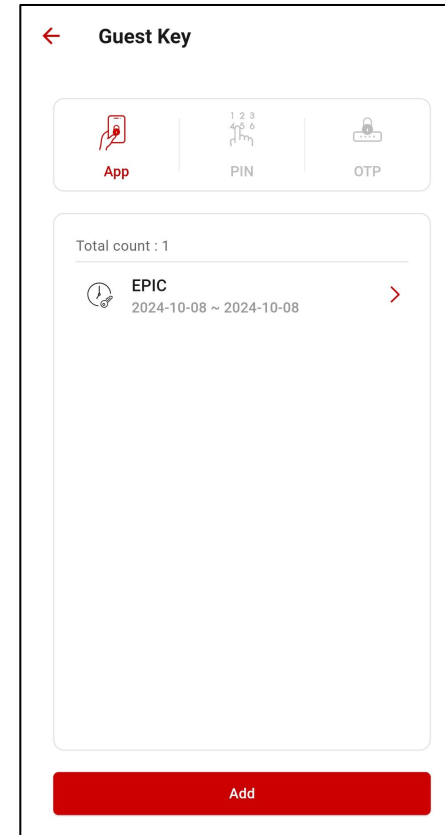
Select 'Guest Key ' from the menu to access the guest key management page, where you can issue and manage guest keys. You can 3 entry methods: APP, PIN, and OTP.



Tap **Add** in **App** to issue an App guest key.



Select the door lock, set the access period, time, days and name, then tap **Save** to send the link.




This is the list of issued App guest keys.

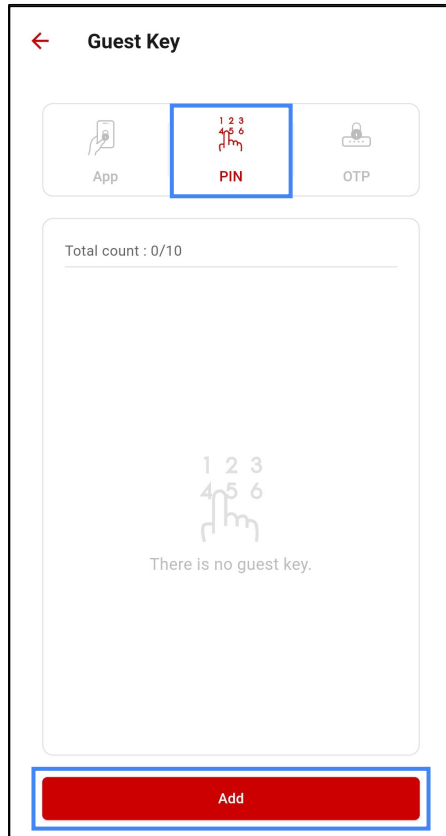
## Guest Key - App

This is an App guest key used to unlock the door via the app.

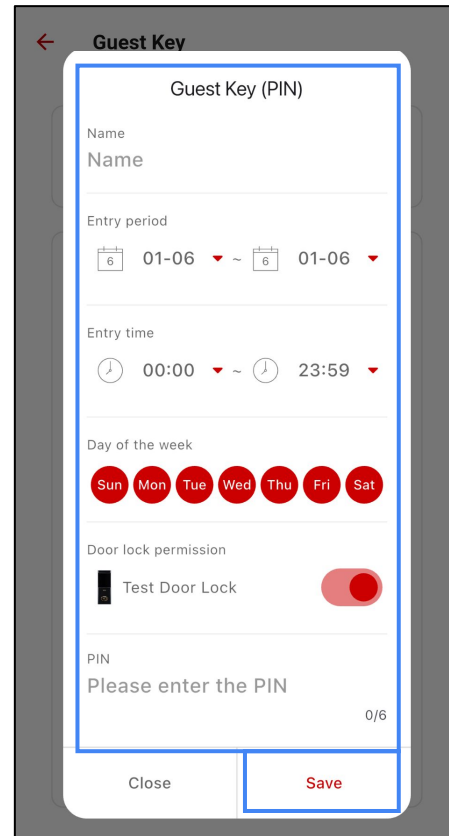
- The App Guest Key is suitable for users who have installed the app.
- To log in with the Guest key(APP) issued using this feature, refer to Section 4 for the Guest Login process.

# 10. Guest Key (2)

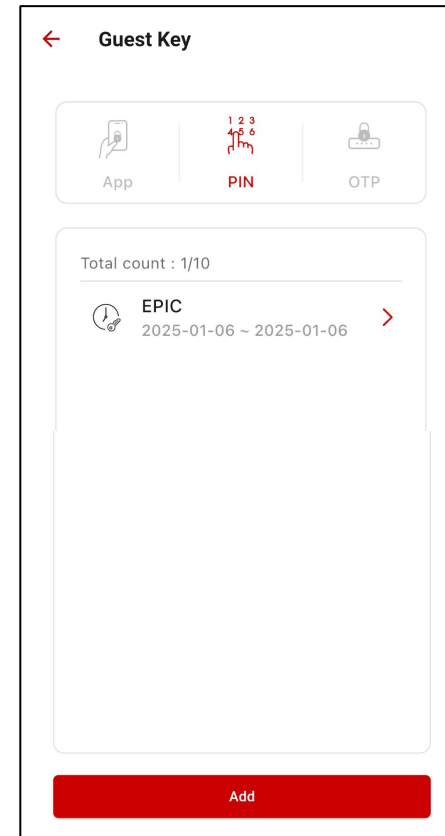
Select 'Guest Key ' from the menu to access the guest key management page, where you can issue and manage guest keys. You can 3 entry methods: APP, PIN, and OTP.



Tap **Add** in **PIN** to issue a PIN guest key.



Select the door lock, set the access period, time, days and name, then tap **Save** to send the link.




This is the list of issued PIN guest keys.

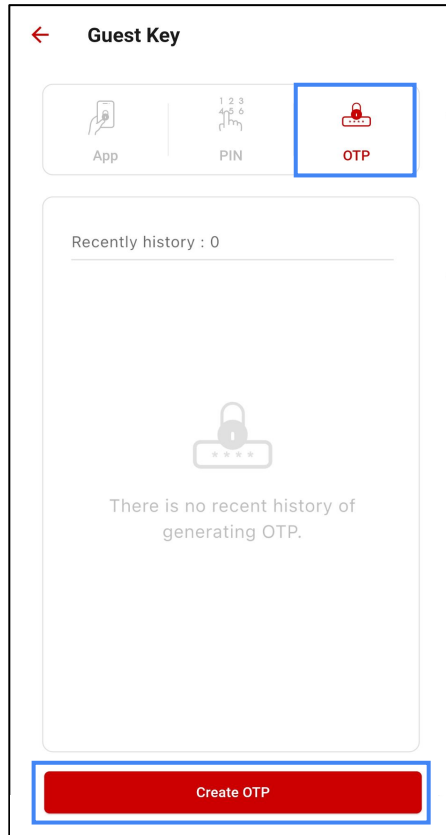
## Guest Key - PIN

This is a PIN guest key used to unlock the door via the PIN.

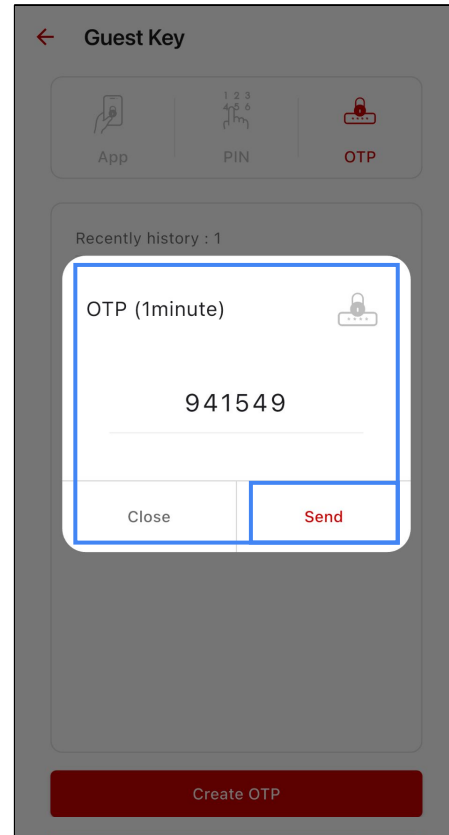
- The PIN Guest Key is suitable for users who have not installed the app.
- The Guest Key(PIN) is 6 digits long, and up to 10 can be set.
- It is separate from the door lock's built-in guest key feature.
- The Guest Key(PIN) feature is only available on door locks connected to a Wifi bridge. If the Wifi bridge is not properly connected, a pop-up dialog is displayed to inform you, and usage is restricted.

# 10. Guest Key (3)

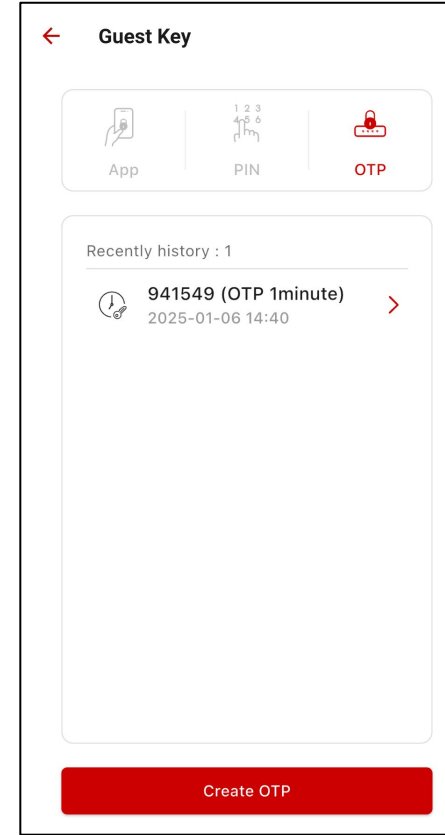
Select 'Guest Key ' from the menu to access the guest key management page, where you can issue and manage guest keys. You can 3 entry methods: APP, PIN, and OTP.



Tap **Create OTP** in **OTP** to issue an OTP guest key.



Check the automatically generated OTP guest key and tap **Send** to send the guest key.



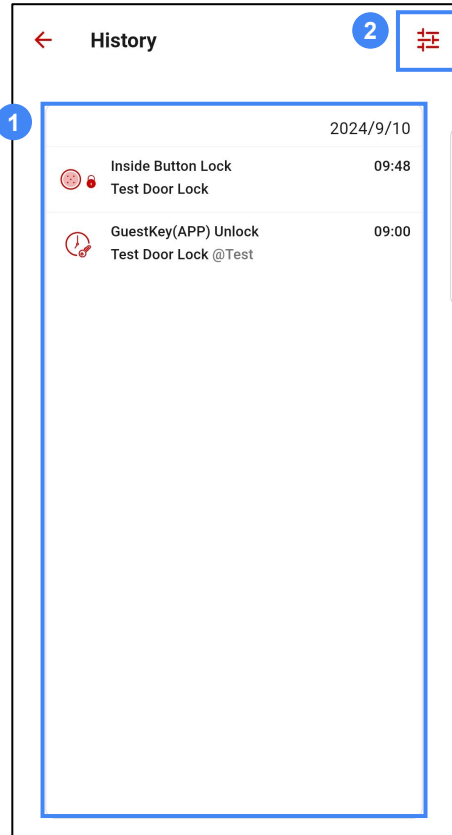

This is the list of issued OTP guest keys.

## Guest Key - OTP



This is an OTP guest key used to unlock the door by entering a one-time password.

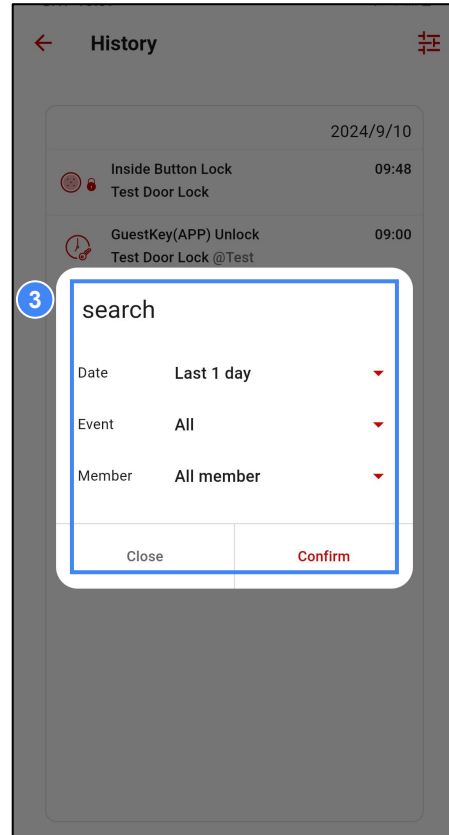
- The Guest Key(OTP) is a one-time password that generates a new password each time it is created to authenticate the user.
- The validity period of the Guest Key(OTP) is 1 minute, and the password consists of 6 digits.
- To use the OTP Guest Key properly, you must open the door once to synchronize the time with the door lock.

# 11. History

Select 'History 

The screenshot shows the 'History' page with a list of access records for the date 2024/9/10. A blue box labeled '1' highlights the list area. A search icon in the top right corner is labeled '2'.


2024/9/10	
 Inside Button Lock Test Door Lock	09:48
 GuestKey(APP) Unlock Test Door Lock @Test	09:00

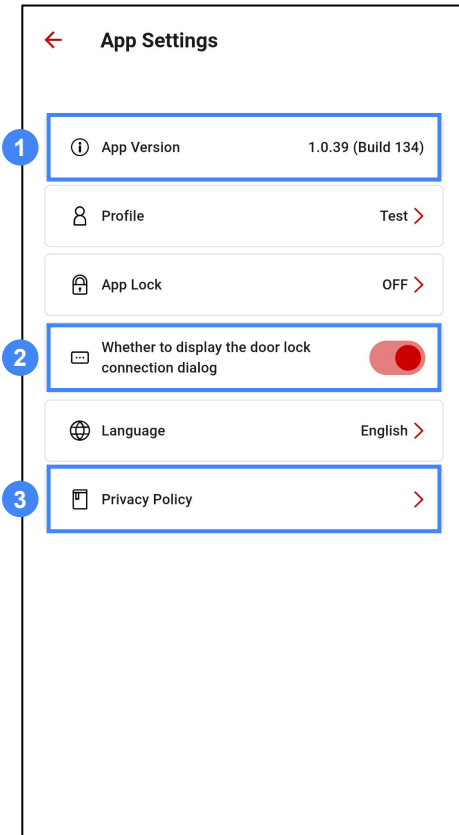


- 1 This is the list of door lock access history.
- 2 You can search the access records based on specific conditions.

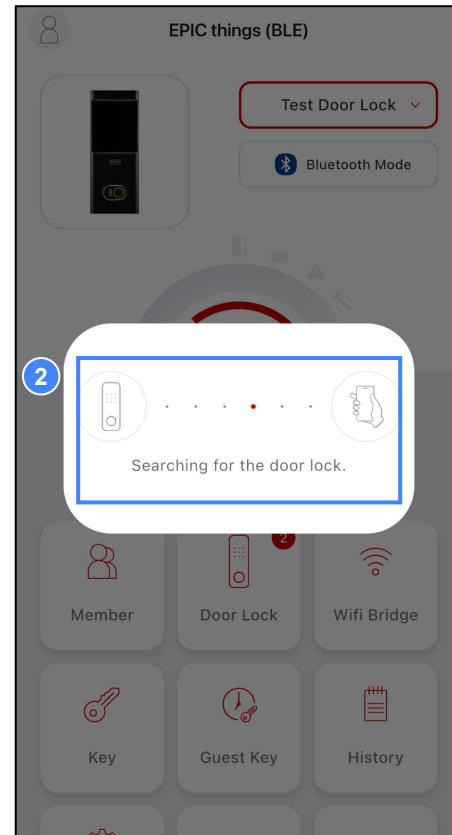
- 3 You can set search conditions such as period, event, and member.

# 12. App Settings (1)

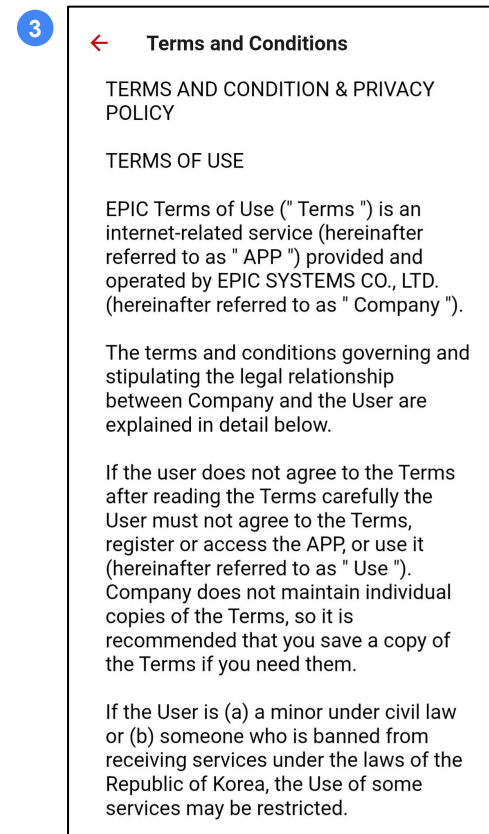
Select 'App Settings ' from the menu to access the app settings page, where you can check the app version, configure the display of the door lock connection status, and adjust various settings such as profile, app lock, language, and privacy policy.



1 Check the app version in **App Version**.

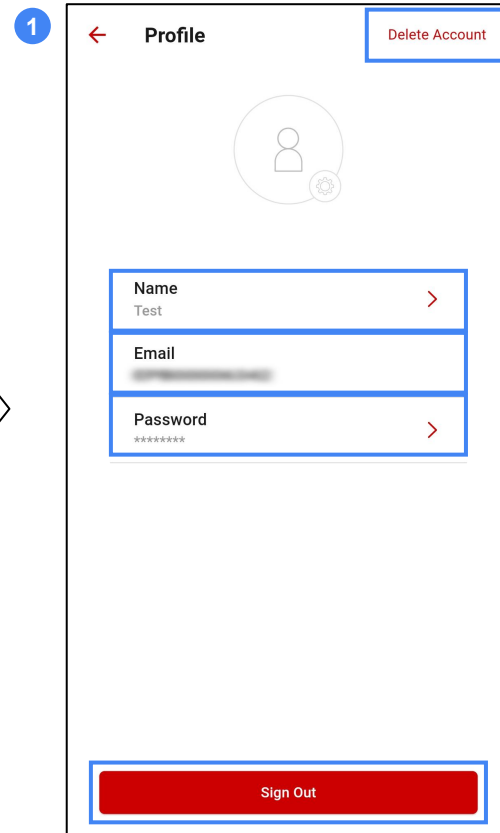
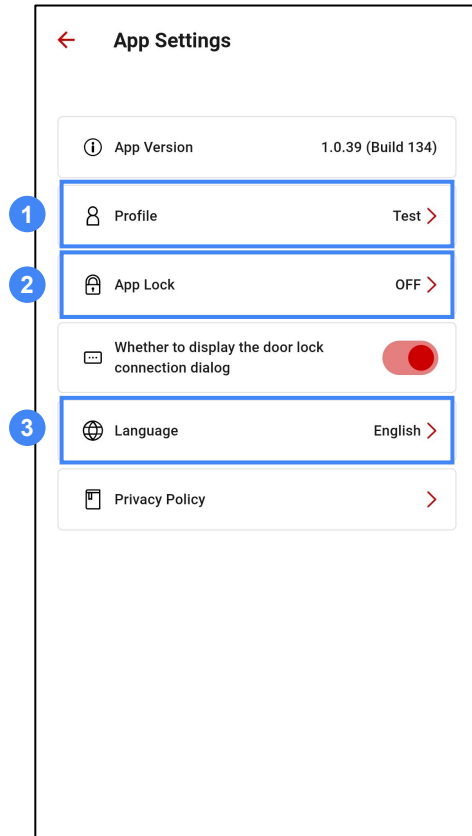


2 Set **whether to display the door lock connection status dialog** on the main screen.

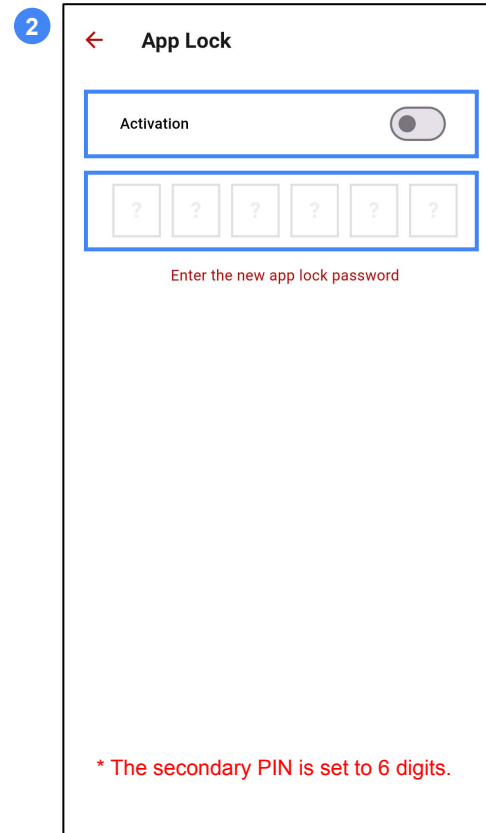


3 The Terms and Conditions, which you agreed to during registration, are displayed in **Privacy Policy**.

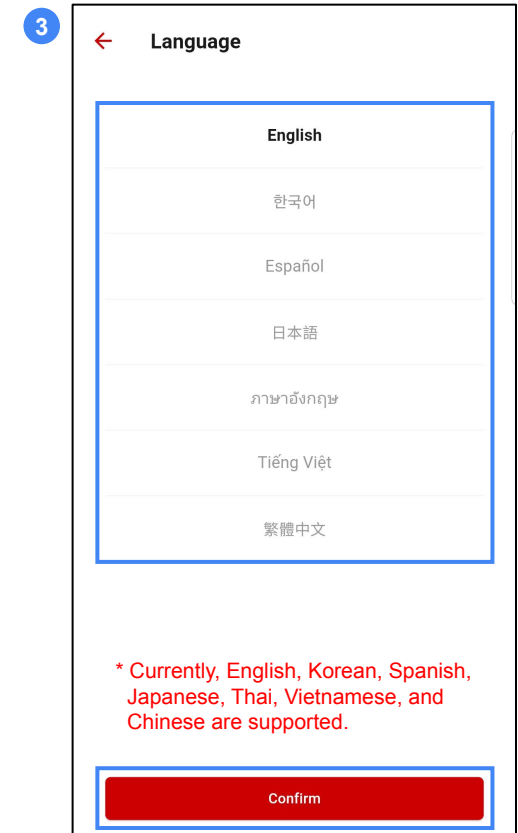
# 12. App Settings (2)



In **Profile**, you can change your name, photo, and password, or log out and delete your account.



In **App Lock**, set a secondary password. When activated, you will need to enter this password every time you access the app.



In **Language**, select your desired language and tap the **Confirm** button to change the language.

Thank you for using  
**EPIC Things**